

Power your life

TEM®



PDU catalogue  
katalog



Turkey has steadily been developing its capacity to produce good quality industrial goods. The electricity sector, where quality and safety have been the determining assets, requires production of up-to-date material to meet the needs of our contemporary lives.

With this vision, **TEM Technical Electrical Materials Industry and Trade Inc.** was established in 1991 to produce plugs & sockets and junction boxes.

We still pursue our operations to realize with the same targets. Our experience has placed TEM as one of the leaders of the market with our capacity to develop new products and our attention on following the growing market necessities.

Our range of products includes CEE NORM plugs and sockets, single phase plugs and sockets designed according to different standards, rubber plugs and sockets, combination boxes available on request, sealed thermoplastic junction boxes, plastic distribution boards, modular aluminum multi-sockets, cable pulleys etc.

TEM, becoming a global brand, is now available in several countries. For this purpose, we are offering you solutions, in conformity with divers standards, by examining customer requirements with a global perspective.

Fully aware of the significance of our job in the comfort and safety of people, we are determined to extend our range and to improve the quality and safety of our products. Our Research and Development department renew their work with this vision.

Our main target is to continuously improve our quality by attaching importance to our quality control operations and to respond efficiently to customer requirements. In this direction, our certificate operations are proof of the trust in us. Besides the trust in our products, the solid structure of TEM Company is also certified: EN ISO 9001: 2008.

We are your reliable partner in providing you with specially tailored products to be delivered in time with competitive prices and with our company's guarantee.

Sincerely yours...

---

Ülkemiz her geçen gün sanayi ürünleri imalatında aşamalar kaydetmektedir. Kalite ve emniyetin çok önemli olduğu elektrik sektöründe çağımıza uygun malzemelerin üretilmesi gereklidir.

Bu görüş ve amaçla organize olan **TEM TEKNİK ELEKTRİK MALZEMELERİ SAN. ve TİC. A.Ş.**, 1991 yılında sanayi tipi fiş, priz ve bağlantı kutuları üretmek amacı ile kurulmuştur.

Kuruluşumuzdan bugüne kadar aynı amaçla çalışmalarımızı sürdürmekteyiz. Tecrübemiz, yeni ürün geliştirme kapasitemiz ve pazarın ihtiyaçlarını takip edebilme dikkatimizle birlikte, TEM'i sektörün liderleri arasına taşımıştır.

Sanayide kullanılan CEE NORM fiş ve prizleri, çeşitli ülke standartlarına yönelik uygun tasarlanan monofaze prizleri, kauçuk fiş ve prizleri, müşteri talebine göre hazırlanan kombinasyon kutuları, plastik dağıtım panoları, etanj özellikte termoplastik buatları, modüler yapıda Alüminyum gövdeli grup prizleri, kablo makaraları imalatı mevcut ürün yelpazemizi oluşturmaktadır.

Her geçen sene bir dünya markası olma yolunda emin adımlarla ilerleyen TEM markasını bugün dünyanın pek çok yerinde bulmak mümkündür. Bunun için müşteri isteklerini global bir perspektifte inceleyip, çeşitli standartlara uygun çözümler sunmaktayız.

Yapılan işin insan hayatındaki yer ve öneminin bilincinde, kalitemizi ve güvenilirliğimizi koruyarak ürün çeşidini arttırmayı hedeflemekteyiz. AR&GE departmanımız çalışmalarını bu vizyonla yenilemektedir. Kalite kontrol çalışmalarımıza önem vererek kaliteyi sürekli arttırmak ve müşteri isteklerine en üst seviyede cevap vermek temel hedefimizdir. Bu doğrultuda sertifika çalışmalarımız, bize olan güvenin garantisidir. Ürünlerimizin güvenilirliği yanı sıra, TEM firmasının sağlam yapısı da sertifikalandırılmıştır: Uluslar arası kalite yönetim sistemimiz EN ISO 9001:2008.

Uygun fiyatlı, isteğe cevap veren, tam zamanında elinizde olan ürünlerimizle ve bitmeyen garantimizle biz sizin yanınızdayız.

Saygılarımızla...

# Contents / İçindekiler

7



## new products

- 2** Power Frame  
Güç Çerçevesi
- 5** Cable Grommet  
Masa Kapağı
- 7** Flip Power Frame  
Kapaklı Güç Çerçevesi

## features

- 10** Horizontal Desk Socket  
Yatay Masa Prizi
- 13** G Type Socket  
G Tipi Priz
- 17** Vertical Desk Socket  
Dikey Masa Prizi
- 23** U42 Power Strips  
U42 Grup Prizler
- 28** U62 Power Strips  
U62 Grup Prizler
- 31** Industrial Solution  
Endüstriyel Çözümler
- 33** Column  
Kolon
- 38** 1U Power Strips  
1U Grup Prizler
- 47** Lighting Solution  
Aydınlatma Çözümleri
- 49** Surface Socket Boxes  
Dahili Priz Kutuları

28



15



## accessories

- 52** 45mm Socket Types / Priz Seçenekleri  
Other Connectors / Diğer Konnektörler  
USB Charger / USB Şarj  
Power Accessories / Güç Aksesuarları



Flip Power Frame



Power Frame



Cable Grommet

- TEM Power Frame can be installed in your desks, or kitchen cupboards.  
TEM Güç Çerçevesi masanıza ya da mutfak dolabınıza monte edilebilir.



- Power Frame allows to use the modular 45mm mosaic sockets or faceplates.

Güç Çerçevesi Modüler 45mm prizler ve kapaklar için tasarlanmıştır.

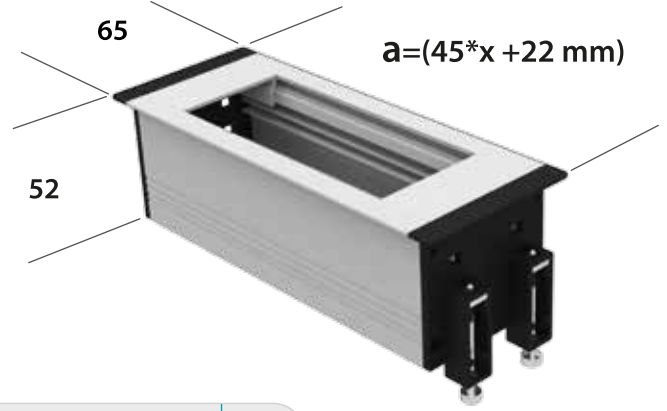
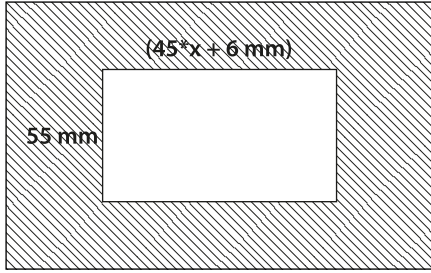
- It is possible to mount the modular connectors on the top or bottom of the desk. This helps us to take power or take connections for the devices under the desk.


Modüler prizleri ve konnektörleri, masanın altına ya da üzerine monte etmek mümkündür.

Bu yönüyle masa üstünde ve altında tüm cihazların konnektör ihtiyaçlarını karşılar.

- **Power Frame easily adapts to your surface cut-out and blends effortlessly.**  
Güç Çerçevesi, mobilyanın yüzeyine yapılan kesime kolayca monte olur.
- **It is an easy way to save space on the desk, in office furniture or on the wall.**  
Duvarınızda, ofis mobilyalarınızda veya masanızda yer kazanmanın kolay yoludur.
- **Its minimal height allows it to fit in even shallow surfaces.**  
İnce tasarımı sayesinde sığ alanlara monte edilebilir.





Ref. Code	Boş Güç Çerçevesi Empty Power Frame	a mm	Kesim Ölçüsü mm Cutting Dimension	
<b>1720.00.00.0010.0</b>	5x45(2x22.5 Cover)	247	231x55	1
<b>1720.00.00.0012.0</b>	6x45(2x22.5 Cover)	292	276x55	1
<b>1720.00.00.0014.0</b>	7x45(2x22.5 Cover)	337	321x55	1
<b>1720.00.00.0016.0</b>	8x45(2x22.5 Cover)	382	366x55	1

	Ref. Code	Güç Çerçevesi Power Frame	a mm	Kesim Ölçüsü mm Cutting Dimension	
	<b>1720.10.10.2010.0</b>	2 Schuko + USB	202	186x55	1
	<b>1720.20.87.3011.0</b>	3 UPS + Cat3 + Cat6	269,5	253,5x55	1
	<b>1720.40.15.2011.0</b>	2 British Socket + VGA + 2 USB	247	231x55	1



### TEM Cable Grommet — We produce solutions

- Quickly and easily inserted into the desk cut-out,
- Cable Grommet guides the cables where they are needed.
- Black Brush on the product allows to access the cables when the cover is closed.

Mobilyada yapılan kesime kolay ve hızlıca monte edilir.

Masa kapağı kablolarınızın ihtiyaç duyulan yere ulaşmasına aracı olur.

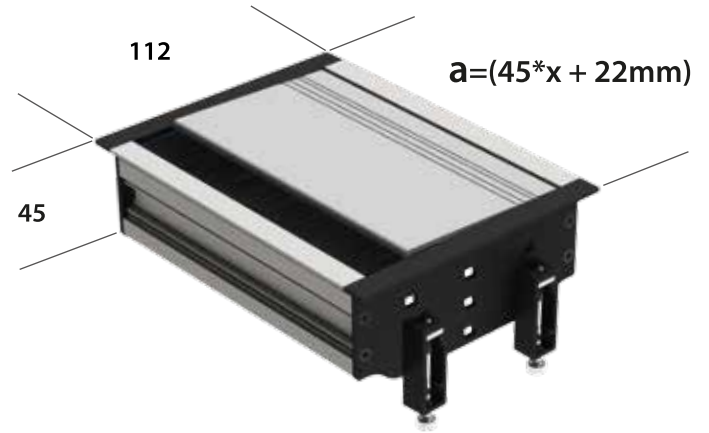
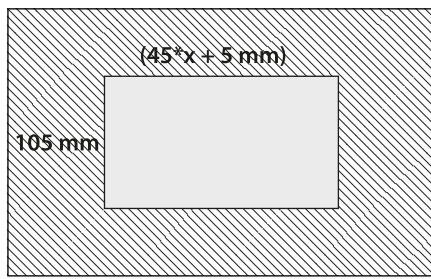
Kapakta yer alan fırça, kapalıyken kablo geçişini sağlar.


- Cable grommet especially well suited to desks in offices and conference rooms.
- It can be combined with TEM Power Frame

Masa Kapağı Ofis masaları ve konferans odaları kullanımına çok uygundur.

TEM Güç Çerçevesi ile uyumludur.





Ref. Code	Boş Güç Çerçevesi Empty Power Frame	a mm	Kesim Ölçüsü mm Cutting Dimension	
1710.00.00.0010.0	5x45	247	230x105	1
1710.00.00.0012.0	6x45	292	275x105	1
1710.00.00.0014.0	7x45	337	320x105	1
1710.00.00.0016.0	8x45	382	365x105	1



## TEM Flip Power Frame — United Power solution

- **Flip PowerFrame** is a combination of TEM Cable Grommet & TEM Power Frame.
- It has the advantages of two different products as one product.

Kapaklı Güç Çerçevesi; TEM Masa Kapağı ve TEM Güç Çerçevesi ürünlerinin birleşmesi ile oluşur. Her iki ürünün de avantajlarını taşır.

- **Black Brush** on the product allows to access the cables when the cover is closed.

Kapağındaki fırça sayesinde kullanırken kapağı kapatabilirsiniz.

# Flip Power Frame Kapaklı Güç Çerçevesi

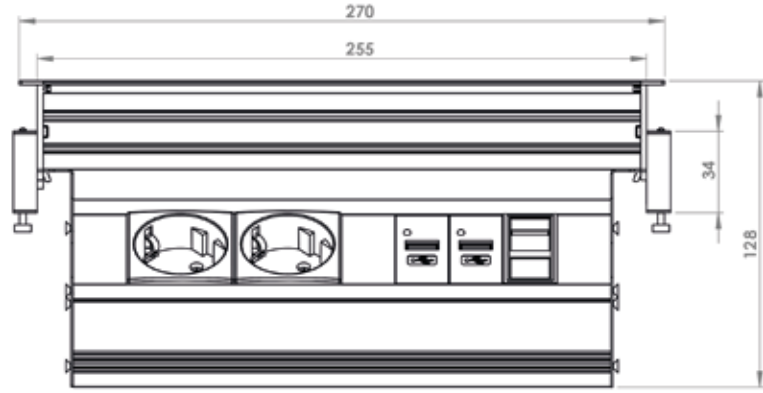
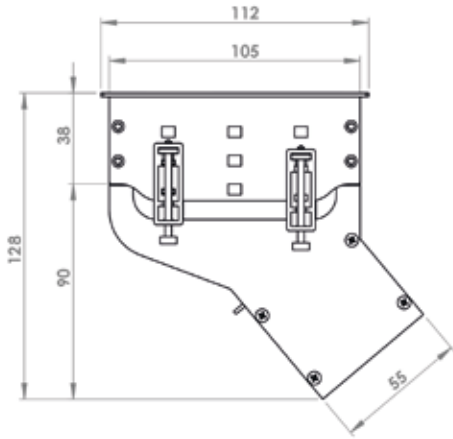
TEM®



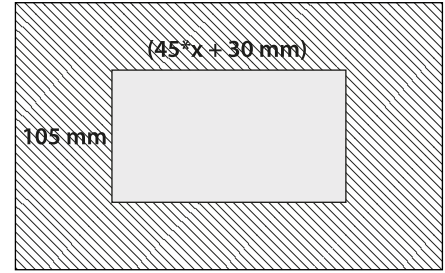
Quickly and easily inserted into the desk cut-out,  
Mobilyada yapılan kesime kolay ve hızlıca monte edilir.



It allows to make connections up or under the desk  
Masa üstü ya da altında bağlantıları kolaylaştırır.



- **Flip Power Frame especially well suited to work stations and conference rooms.**  
Özellikle çalışma alanı masaları ve konferans odaları için kullanışlıdır.
- **It is a solution for all type of desks that needs to access distribution of power.**  
Güç erişimi gerektiren her çeşit masada uygun çözümler sağlar.
- **Allows to use the modular 45mm mosaic sockets or faceplates.**  
Modüler 45mm prizler ve kapaklar ile uyumludur.
- **Compatible Product Horizontal Desk Socket (page: 10)**  
Karşılaştırılabilir ürün: Yatay Masa Prizi (sayfa: 10)



Ref. Code	Boş Kapaklı Güç Çerçevesi Empty Flip Power Frame	a mm	Kesim Ölçüsü mm Cutting Dimension	
<b>1730.00.00.0010.0</b>	5x45(2x22.5 Cover)	247	255x105	1
<b>1730.00.00.0012.0</b>	6x45(2x22.5 Cover)	292	300x105	1
<b>1730.00.00.0014.0</b>	7x45(2x22.5 Cover)	337	345x105	1
<b>1730.00.00.0016.0</b>	8x45(2x22.5 Cover)	382	390x105	1



Ref. Code	Kapaklı Güç Çerçevesi Flip Power Frame	a mm	Kesim Ölçüsü mm Cutting Dimension	
<b>1730.10.10.2010.0</b>	2 Schuko + USB	202	210x105	1

<b>1730.10.10.2020.0</b>	2 Schuko + 2 USB	224.5	332.5x105	1
--------------------------	------------------	-------	-----------	---

<b>1730.12.87.2211.0</b>	2 Schuko + 2 UPS + Cat6 + Cat3	337	345x105	1
--------------------------	-----------------------------------	-----	---------	---

<b>1447.16.20.3111.0</b>	3 Schuko + Universal + 2 USP	337	345x105	1
--------------------------	---------------------------------	-----	---------	---



## Horizontal Desk Socket — Yatay Masa Prizi

- The Horizontal Desk Socket offers you high functionality.
- Complete unit for power, data and media connections on desks and conference tables.
- Allows to use the modular 45mm mosaic sockets or faceplates.

Yatay Masa Prizi size yüksek işlevsellik sunar.

Güç, data ve multimedya konnektörlerinin tümünü masanıza taşır.

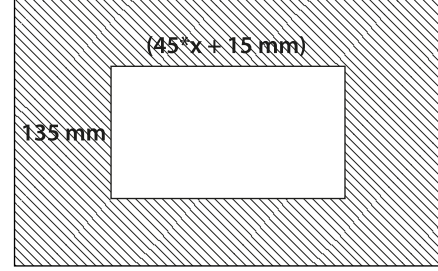
Modüler 45mm prizler ve kapaklar ile uyumludur.




- **It has easy access covers for the first connection trough the cable terminal.**  
İlk bağlantıda kablo klemensine kolay erişim sağlayan kapağı vardır.
- **Under desk cable entrance hole, allows flexibility in case of any renovation.**  
Masa altı kablo giriş deliği sayesinde, onarım ve yenileme durumunda esneklik sağlar.
- **Quickly and easily inserted into the desk cut-out and fix into desk with plastic side covers.**  
Mobilyada yapılan kesime, plastik kapakları sayesinde kolay ve hızlıca monte edilir.


# Horizontal Desk Socket Yatay Masa Prizi

TEM®



Ref. Code	Boş Güç Çerçevesi Empty Power Frame	a mm	Kesim Ölçüsü mm Cutting Dimension	
1447.00.00.0010.0	5x45(2x22.5 Cover)	325	240x135	12
1447.00.00.0010.0	6x45(2x22.5 Cover)	370	285x135	12
1447.00.00.0010.0	7x45(2x22.5 Cover)	415	330x135	12
1447.00.00.0010.0	8x45(2x22.5 Cover)	460	375x135	12



Ref. Code	Yatay Masa Prizi Horizontal Desk Socket	a mm	Kesim Ölçüsü mm Cutting Dimension	
1740.10.80.4020.1	4Schuko+2Cat6 +Kablo	392.5	362x134	1

1740.12.87.2211.0	2Schuko+2UPS+Cat6 +Cat3	416	384x134	1
-------------------	----------------------------	-----	---------	---

1740.12.80.2440.2	2Schuko+4UPS+4Cat6 + Soket Girişli	552	520x134	1
-------------------	---------------------------------------	-----	---------	---

1740.12.80.3340.0	3Schuko+3UPS+4Cat6	552	520x134	1
-------------------	--------------------	-----	---------	---



## G Type Desk Socket — G tipi Masa Grubu

- Free-standing with special fixation aparat.
- Makes no harm on the desk, no need holes or screwdriving.
- Regardless of location can be used on every desk.

Masa üzerinde serbesttir ve sabitleyici bir aparat ile hızlıca tutturulur.

Masanıza zarar vermez, kesim yapmanıza ya da vidalamanıza gerek yoktur.

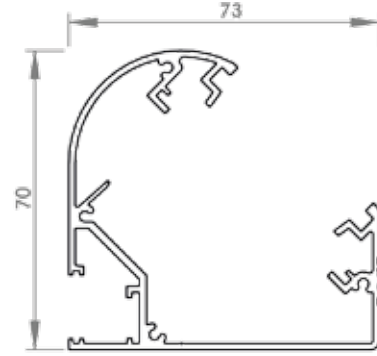
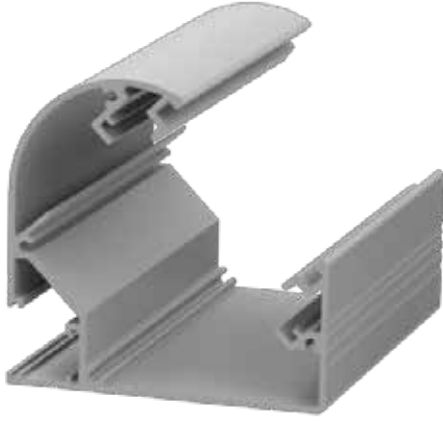
Her masada ve konumda rahatça kullanılır.



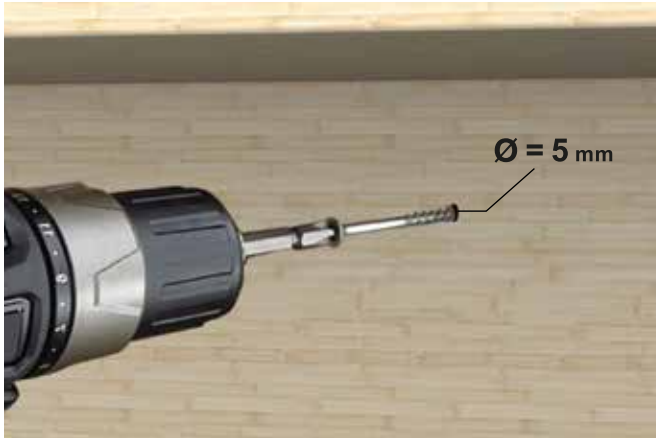


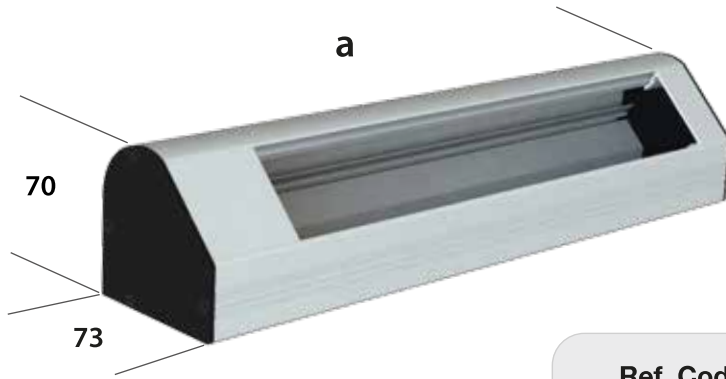


- **G type Socket can be installed in your kitchen under the cupboards or shelves.**  
G tipi kanal mutfaklarınızda raf ya da tezgah altlarında kullanılabilir.
- **G desk Socket especially well suited to desks in offices and homes or kitchens.**  
G tipi Priz Grubu, Ofis ve Evde kullanılan çalışma masaları ve mutfaklar için çok uygundur.
- **You can also use the LED module for bench lighting.**  
LED modülü ile tezgah aydınlatması için kullanabilirsiniz.
- **Power, data and multimedia has an outstanding flexibility through use of 45mm Custom Modules.**  
Güç, data ve multimedya soketlerine 45mm modüler prizlerin çeşitliliği ile sahiptir.
- **Compatible Product: Burotic Sockets U62 & U42 (page: 23-30)**  
Karşılaştırılabilir ürün: Bürtik Gruplar U62 & U42 (sayfa: 23-30)



- **Simply adapt the power stirp into your wall or cupboards.**  
Grubu duvara ya da dolap kenarına basitçe monte edebilirsiniz.
- **It has easy access covers for the first connection trough the cable terminal.**  
İlk bağlantıda kablo klemensine kolay erişim sağlayan kapağı vardır.
- **Take out aluminum cover with a screwdriver help, mount the G type socket on the wall with screws and place the cover by pushing.**  
Tornavida yardımı ile alüminyum kapağı basitçe kaldırın, G tipi priz grubunu duvara vidalayın ve alüminyum kapağı bastırarak yerine takın.





Ref. Code	Boş G Tipi Priz Empty G Type Socket	a mm	
1700.00.00.0010.0	5x45(45+22.5 Cover)	292.5	1
1700.00.00.0012.0	6x45(45+22.5 Cover)	337.5	1
1700.00.00.0014.0	7x45(45+22.5 Cover)	382.5	1
1700.00.00.0016.0	8x45(45+22.5 Cover)	428.5	1



Ref. Code	G Tipi Priz G Type Socket	a mm	
1700.20.78.3011	3UPS + Cat6 + Cat3	279	1



1700.12.78.2211	2Schuko + 2UPS+ Cat6 + Cat3	346	1
-----------------	-----------------------------	-----	---



1700.26.78.3111	3UPS + Universal + Cat6 + Cat3	346	1
-----------------	--------------------------------	-----	---

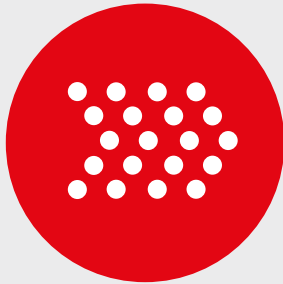


1700.2.178.3111	3UPS + Cat6 + Cat3 + USB	301	1
-----------------	--------------------------	-----	---



740.050.030	Montaj Ayağı / Mounting Aparat	30	1
740.050.070	Montaj Ayağı / Mounting Aparat	70	1

- **a** is maximum mount of desk thickness for special fixation aparat.  
Ayak aparatte: **a** miktarı maximum masa kalınlığı ölçüsüdür.



Push-up Rising Socket



Press down with your finger  
to raise the handling then pull up  
Prizi açmak için kapağına bastırın ve yukarı çekin



## PUSH-UP Rising Socket

- With a modern look, fits perfectly in any setting.
- Installation is very simple.
- Suitable for standard 60 mm hole; ideal for tiny spaces.
- Placed in a cut-out 60 mm in diameter and fixed to the furniture by turning the lock ring.

Her alana uyum sağlar.

Kurulumu çok basittir.

Standart 60mm deliklere uygundur ve dar alanlarda ideal çözümdür.

60mm çapındaki deliğe yerleştirilir ve kilitleme yüzüğü çevrilerek monte edilir.

- Modules can be assembled to customer's needs.

Modüler yapısı sayesinde müşteri talepleri ile uluşturur.

- Power Sockets, RJ45 datas and telephone sockets and USB chargers are available modules.

Elektrik prizleri, data telefon konnektörleri ve USB şarj cihazı monte edilebilir.



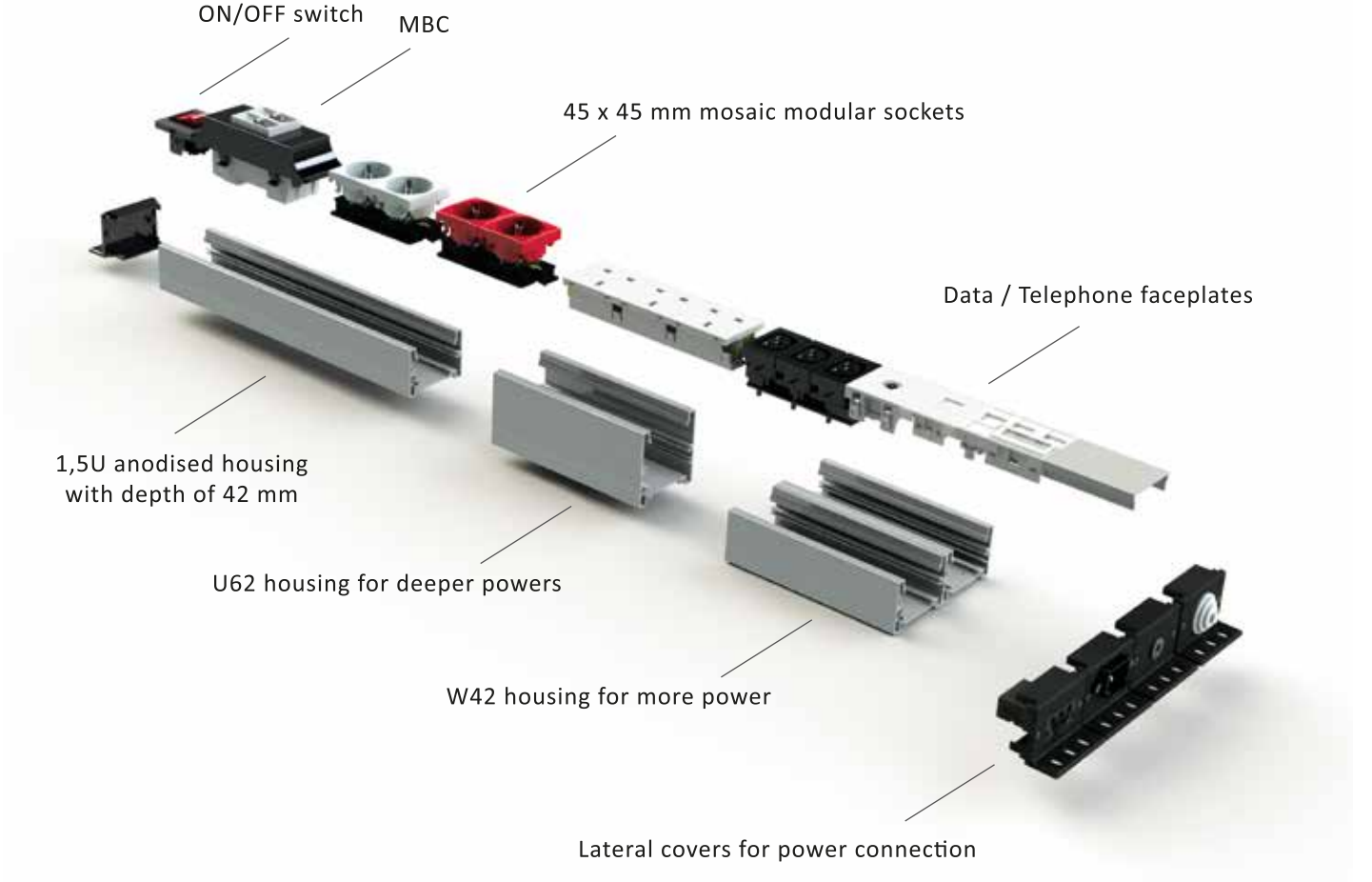


Ref. Code	Dikey Masa Prizi Vertical Desk Socket	a mm	Kesim Ölçüsü mm Cutting Dimension	
<a href="#">1800.10.20.2010.0</a>	2Schuko + 2USB	210	60 Ø	1

<a href="#">1800.20.20.2010.0</a>	2UPS + 2USB	210	60 Ø	1
-----------------------------------	-------------	-----	------	---

<a href="#">1804.10.20.2010.0</a>	2Schuko + 2USB + Gerilim koruma (SPD)	276	60 Ø	1
-----------------------------------	--	-----	------	---

<a href="#">1804.20.20.2010.0</a>	2UPS + 2USB + Gerilim koruma (SPD)	276	60 Ø	1
-----------------------------------	---------------------------------------	-----	------	---



- **Opportunity to produce different lengths to meet every demand.**  
Tüm ihtiyaçları karşılayabilecek farklı uzunluklarda üretim imkanı.
- **Modern and Modular power strip designs.**  
Modern ve modüler priz grubu tasarımları.
- **Decorative outlook with aluminium housing.**  
Alüminyum gövdesi ile dekoratif görünüm.
- **Safe earth connection on housing without holes.**  
Gövdede delik açmadan güvenilir topraklama bağlantısı.
- **Different Socket Outlet colors available for management.**  
Farklı renklerde priz seçenekleri ile özel gruplar.

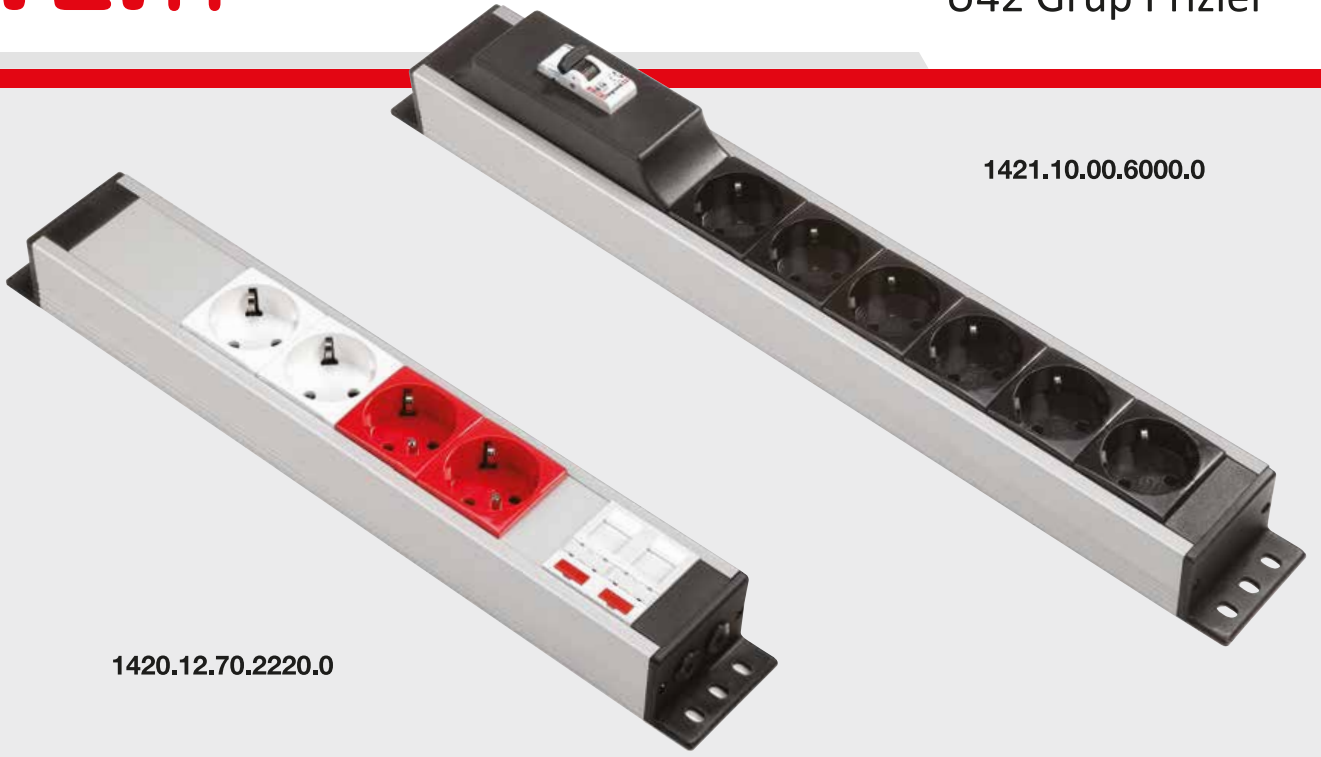
Burotic Types : **U42, U62, W42, H62 (vertical and horizontal use)**

Alüminyum Gövde tipleri: **U42, U62, W42, H62 (dikey ve yatay kullanım)**



# Office Type Power Strips Bürotik Grup Prizler

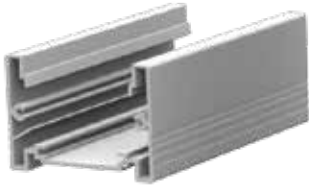




1420.12.70.2220.0

1421.10.00.6000.0

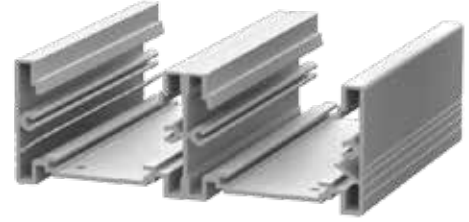
### TEM PDU — Tight solution



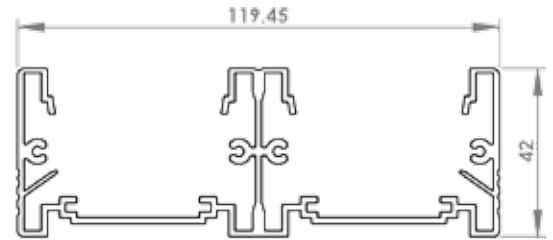
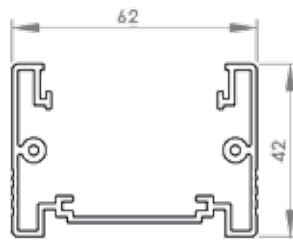
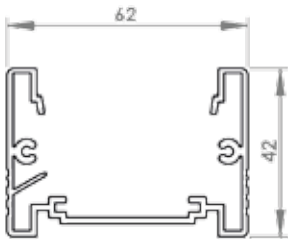
U42 Single Aluminium  
U42 Tekli Alüminyum



U42 Single Plastic  
U42 Plastik Tekli



W42 Double Aluminium  
W42 Çiftli Alüminyum



**TEM PDU** provides a customized design with its assorted housing types, various protection alternatives and connector modules.

Farklı profil seçenekleri, çeşitli koruma tipleri ve soket elemanları ile TEM PDU size özel tasarım imkanı sağlar.



Ref. Code	Standart Grup Standard Group	Ref. Code	Standart Grup Standard Group
<a href="#">1420.10.00.6000.0</a>	6 Schuko	<a href="#">1420.20.00.6000.0</a>	6 UPS
<a href="#">1420.10.00.7000.0</a>	7 Schuko	<a href="#">1420.20.00.7000.0</a>	7 UPS
<a href="#">1420.10.00.8000.0</a>	8 Schuko	<a href="#">1420.20.00.8000.0</a>	8 UPS
<a href="#">1420.10.00.9000.0</a>	9 Schuko	<a href="#">1420.20.00.9000.0</a>	9 UPS
<a href="#">1420.10.00.10000.0</a>	10 Schuko	<a href="#">1420.20.00.10000.0</a>	10 UPS



Ref. Code	Sigortalı Grup MCB Group	Ref. Code	Sigortalı Grup MCB Group
<a href="#">1421.10.00.6000.0</a>	6 Schuko + MCB	<a href="#">1421.20.00.6000.0</a>	6 UPS + MCB
<a href="#">1421.10.00.7000.0</a>	7 Schuko + MCB	<a href="#">1421.20.00.7000.0</a>	7 UPS + MCB
<a href="#">1421.10.00.8000.0</a>	8 Schuko + MCB	<a href="#">1421.20.00.8000.0</a>	8 UPS + MCB
<a href="#">1421.10.00.9000.0</a>	9 Schuko + MCB	<a href="#">1421.20.00.9000.0</a>	9 UPS + MCB
<a href="#">1421.10.00.10000.0</a>	10 Schuko + MCB	<a href="#">1421.20.00.10000.0</a>	10 UPS + MCB



Ref. Code	Anahtarlı Grup Switch Group	Ref. Code	Anahtarlı Grup Switch Group
<a href="#">1423.10.00.6000.0</a>	6 Schuko + Switch	<a href="#">1423.20.00.6000.0</a>	6 UPS + Switch
<a href="#">1423.10.00.7000.0</a>	7 Schuko + Switch	<a href="#">1423.20.00.7000.0</a>	7UPS + Switch
<a href="#">1423.10.00.8000.0</a>	8 Schuko + Switch	<a href="#">1423.20.00.8000.0</a>	8 UPS + Switch
<a href="#">1423.10.00.9000.0</a>	9 Schuko + Switch	<a href="#">1423.20.00.9000.0</a>	9 UPS + Switch
<a href="#">1423.10.00.10000.0</a>	10 Schuko + Switch	<a href="#">1423.20.00.10000.0</a>	10 UPS + Switch



				
<b>Ref. Code</b>	<a href="#">1420.12.78.2222.0</a>	<a href="#">1420.12.78.3211.0</a>	<a href="#">1420.12.78.2312.0</a>	<a href="#">1420.12.78.3311.0</a>
<b>Özel Grubu Special Group</b>	2 Schuko + 2 UPS + Cat6 + Cat3	3 Schuko + 2 UPS + Cat6 + Cat3	2 Schuko + 3 UPS + Cat6 + Cat3	3 Schuko + 3 UPS + Cat6 + Cat3



Ref. Code	Standart Grup Standard Group	Ref. Code	Standart Grup Standard Group
<a href="#">1430.10.00.9000.0</a>	9 Schuko	<a href="#">1430.20.00.6000.0</a>	9 UPS
<a href="#">1430.10.00.12000.0</a>	12 Schuko	<a href="#">1430.20.00.7000.0</a>	12 UPS
<a href="#">1430.10.00.15000.0</a>	15 Schuko	<a href="#">1430.20.00.8000.0</a>	15 UPS



Ref. Code	Sigortalı Grup MCB Group	Ref. Code	Sigortalı Grup MCB Group
<a href="#">1431.10.00.9000.0</a>	9 Schuko + MCB	<a href="#">1431.20.00.6000.0</a>	9 UPS + MCB
<a href="#">1431.10.00.12000.0</a>	12 Schuko + MCB	<a href="#">1431.20.00.7000.0</a>	12 UPS + MCB
<a href="#">1431.10.00.15000.0</a>	15 Schuko + MCB	<a href="#">1431.20.00.8000.0</a>	15 UPS + MCB



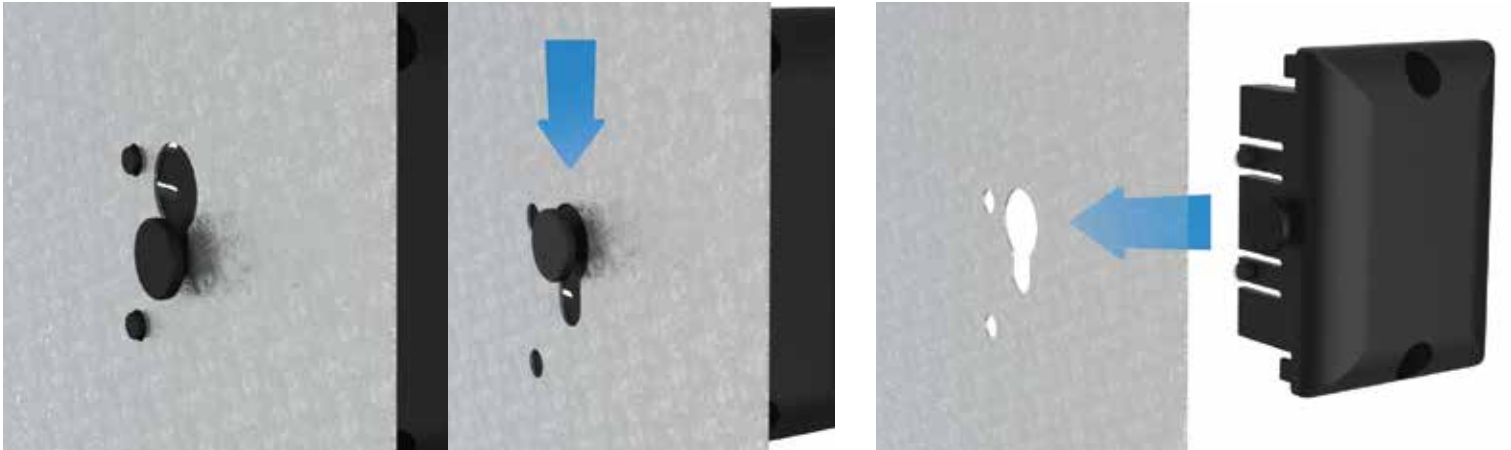
Ref. Code	Sigortalı Grup MCB Group	Ref. Code	Sigortalı Grup MCB Group
<a href="#">1433.10.00.9000.0</a>	9 Schuko + Switch	<a href="#">1433.20.00.6000.0</a>	9 UPS + Switch
<a href="#">1433.10.00.12000.0</a>	12 Schuko + Switch	<a href="#">1433.20.00.7000.0</a>	12 UPS + Switch
<a href="#">1433.10.00.15000.0</a>	15 Schuko + Switch	<a href="#">1433.20.00.8000.0</a>	15 UPS + Switch



<b>Ref. Code</b>	<a href="#">1430.12.78.2222.0</a>	<a href="#">1430.12.78.3211.0</a>	<a href="#">1430.12.78.2312.0</a>
<b>Özel Grubu Special Group</b>	2 Schuko + 2 UPS + Cat6 + Cat3	3 Schuko + 2 UPS + Cat6 + Cat3	2 Schuko + 3 UPS + Cat6 + Cat3



**NEW Lateral Cover** — Functional idea



**742.500.001**  
Closed Cover  
Düz Kapak



**742.512.011**  
Single Hole Cover  
Tek Delikli Kapak



**742.512.021**  
Double Hole Cover  
İkili Delikli Kapak

### Lateral Covers for U42 / U42 için Yan Kapaklar



**742.000.001**  
Closed Cover  
Düz Kapak



**742.012.011**  
Single Hole Cover  
Tek Delikli Kapak



**742.012.021**  
Double Hole Cover  
İkili Delikli Kapak



**742.012.031**  
Triple Hole Cover  
Üçlü Delikli Kapak



**742.012.041**  
Plural Hole Cover  
Çok Delikli Kapak



**742.025.011**  
Cover with Hole for Gland  
Rekor Delikli Kapak



**742.025.111**  
Cover with Gland  
Rekorlu Kapak



**742.016.111**  
Cover with Screw Gland  
Vidalı Rekorlu Kapak



**742.090.011**  
Cover with Hole for Keystone  
Konnektörü Delikli Kapak



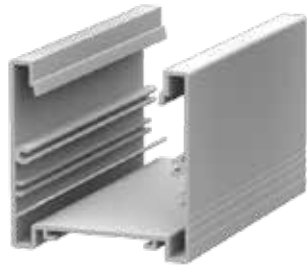
**742.012.031**  
Cover with Locking Socket  
Kilitli Soketli Kapak



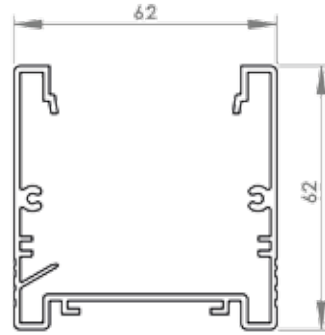
**742.014.211**  
Cover with Socket  
Kilitli Kapak



**742.014.231**  
Cover with Socket  
Kilitli Kapak

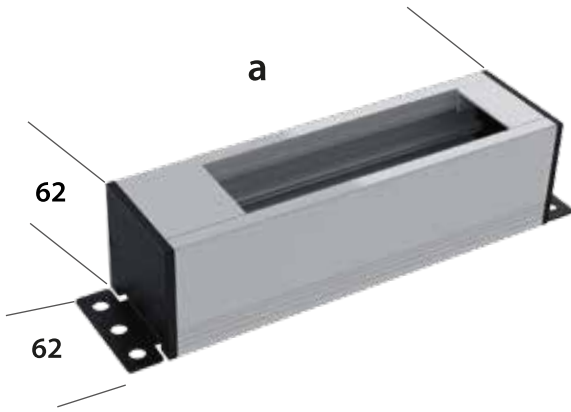



U62 Singel  
U62 Tekli Derin



## TEM U62 PDU — Deep Power Solution

- **Deep aluminium housing (62mm), gives a space for cables under the sockets.**  
Derin alüminyum gövde (62mm), prizlerin altından kablo geçmesi için yeterli alan verir.
- **It is ideal housing for multimedia connectore where more space needs.**  
Görüntü, ses ve data konnektörleri gibi daha derin alana ihtiyaç duyan bağlantılar için idealdir.



Ref. Code	Boş U62 Kanal Empty U62 PDU	a mm	
<a href="#">1620.00.00.0010.0</a>	5x45(45+22.5 Cover)	234	1
<a href="#">1620.00.00.0012.0</a>	6x45(45+22.5 Cover)	279	1
<a href="#">1620.00.00.0014.0</a>	7x45(45+22.5 Cover)	324	1
<a href="#">1620.00.00.0016.0</a>	8x45(45+22.5 Cover)	369	1
<a href="#">1620.00.00.0018.0</a>	9x45(45+22.5 Cover)	414	1
<a href="#">1620.00.00.0020.0</a>	10x45(45+22.5 Cover)	459	1



				
<b>Ref. Code</b>	<a href="#">1620.12.78.2222.0</a>	<a href="#">1620.12.78.3211.0</a>	<a href="#">1620.12.78.3311.0</a>	<a href="#">1620.12.78.2312.0</a>
<b>Özel Grubu Special Group</b>	2 Schuko + 2 UPS + Cat6 + Cat3	3 Schuko + 2 UPS + Cat6 + Cat3	2 Schuko + 3 UPS + Cat6 + Cat3	3 Schuko + 3 UPS + Cat6 + Cat3





**762.000.001**  
Closed Cover  
Düz Kapak



**762.025.011**  
Cover with Hole for Gland  
Rekor Delikli Kapak



**762.012.011**  
Single Hole Cover  
Tek Delikli Kapak



**762.012.021**  
Double Hole Cover  
İkili Delikli Kapak



**762.012.031**  
Triple Hole Cover  
Üçlü Delikli Kapak



**762.012.051**  
Plural Hole Cover  
Çok Delikli Kapak



**762.025.111**  
Cover with Gland  
Rekorlu Kapak



**762.025.121**  
Cover with Double Gland  
Çift Rekorlu Kapak



**762.029.111**  
Cover with Screw Gland  
Vidalı Rekorlu Kapak



**762.013.211**  
Cover with Plug  
Kilitli Kapak



**762.013.231**  
Cover with Plug & Single Hole  
Delikli & Kilitli Kapak



**762.014.211**  
Cover with Socket  
Kilitli Kapak



**762.014.221**  
Cover with Double Socket  
Çift Kilitli Kapak



**762.020.311**  
Cover with Locking Socket  
Kilitli Soketli Kapak



**762.020.321**  
Cover with Double Locking Socket  
Çift Kilitli Soketli Kapak



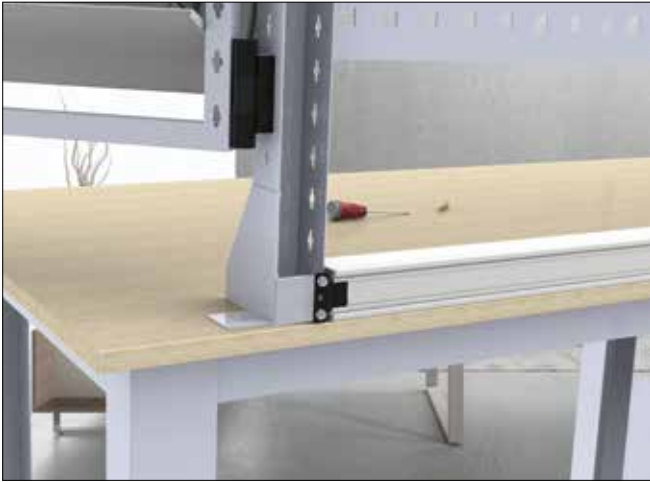
## TEM Powers — Your Industrial Needs

**TEM Powers**, developing special solution for customers with its various protection alternatives and connector modules.

With the solid alüminyum housing, elegant design and modulaire structure, It present solutions in every area.

TEM PDU farklı profil seçenekleri, modüler enerji, multimedya konnektörleri ile endüstriyel çözümler sunar. TEM PDU, sağlam alüminyum gövdesi, şık tasarımı ve modüler yapısı ile her alanda kullanılabilir.





- Every work place needs power.
- TEM is manufacturing special solution for its customers.
- With the 45mm mosaic components, different national sockets can be used.

Her çalışma alanında elektrik ihtiyacı vardır.

TEM müşterilerine özel çözümler geliştirir ve imal eder.

45mm modüler komponentler ile farklı ülke prizleri uygulanabilir.



## TEM Vertical Power Frame

- **TEM Vertical Column Powers free standing base made of colored metal.**

Easily and securely can be fixed by this circular metal base.

TEM Dikey Kolon prizlerin ayakları boyalı metalden yapılmıştır.

Bu yuvarlak metal ayak sayesinde kolay ve güvenli bir şekilde sabitlenir.

- **It can be a free-standing power solution for home, offices or waiting areas.**

Yerde duran güç çözümü olarak evde, ofiste ya da bekleme salonunda kullanılabilir.



U62 Singel  
U62 Tekli Derin



H62 Double  
H62 Çiftli



H100 Double  
H100 Çiftli



<b>Ref. Code</b>	<b>1102.12.87.2222*</b>	<b>1103.3.531.6111*</b>	<b>1105.12.69.2211*</b>	<b>1655.1001.2001</b>
<b>Açıklama Description</b>	2 ( 2 Schuko + 2 UPS + 2 Cat6 + 2 Cat3 + 2 MCB ) H Double Column	2 ( 4 IEC Prizi + HDMI + USB Charger + RCA + ON/OFF Switch ) H Double Column	2 ( 2 Schuko + 2 UPS + RCA + TV Socket + Switch ) H Double Column	2 Schuko + 3 UPS + USB Charger + LED 1U Single Column



<b>Ref. Code</b>	<b>1626.12.87.2211</b>	<b>1626.2.351.3111</b>	<b>1627.20.13.2011*</b>	<b>1627.40.10.3010*</b>
<b>Açıklama Description</b>	2 Schuko + 2 UPS + Cat6 + Cat3 Single Column	3 UPS + VGA + USB Charger + HDMI Single Column	2 UPS + USB Şarj + HDMI Double Column	3 Biritish Prizi + USB Charger Double Column

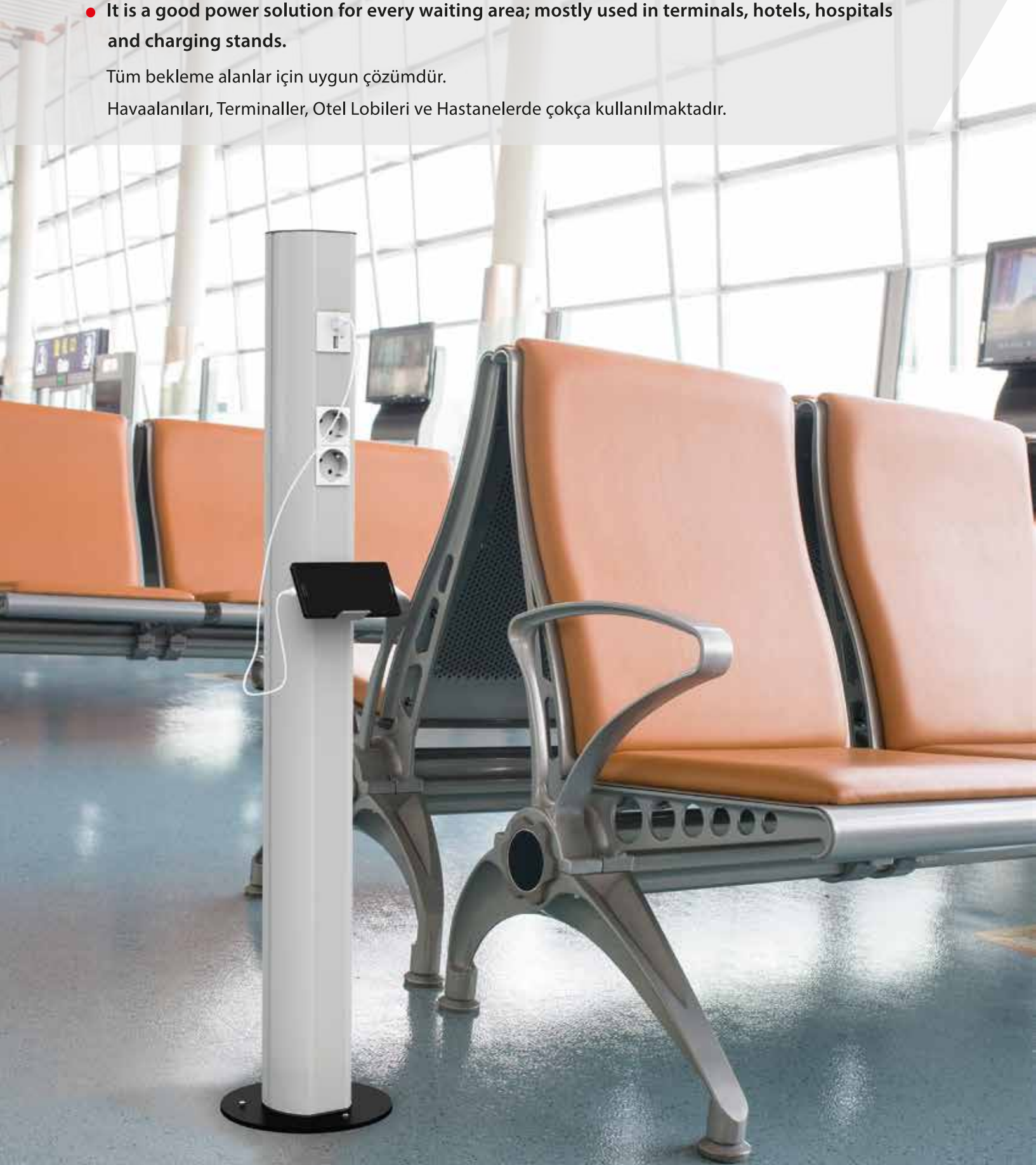
- **TEM Column** is a free-standing product,can move as a flexible solution.  
TEM Kolon esnek çözüm olarak farklı yerlerde kullanmak için kolayca taşınabilir.
- **Sockets, Data and Multimedia modules** are available at a convenient height.  
Uygun yüksekliği ile prizler, data ve multimedya modülleri daha kullanışlıdır.
- **It is a decorative product and good -look at view for your room.**  
Evinizde dekoratif ve güzel görünür.



- It is a good power solution for every waiting area; mostly used in terminals, hotels, hospitals and charging stands.

Tüm bekleme alanlar için uygun çözümdür.

Havaalanları, Terminaller, Otel Lobileri ve Hastanelerde çokça kullanılmaktadır.



- By benefits of adjustable base, it can fix Column PDU on the ground to the ceiling.
- It accommodates all the required connectors in the work areas.

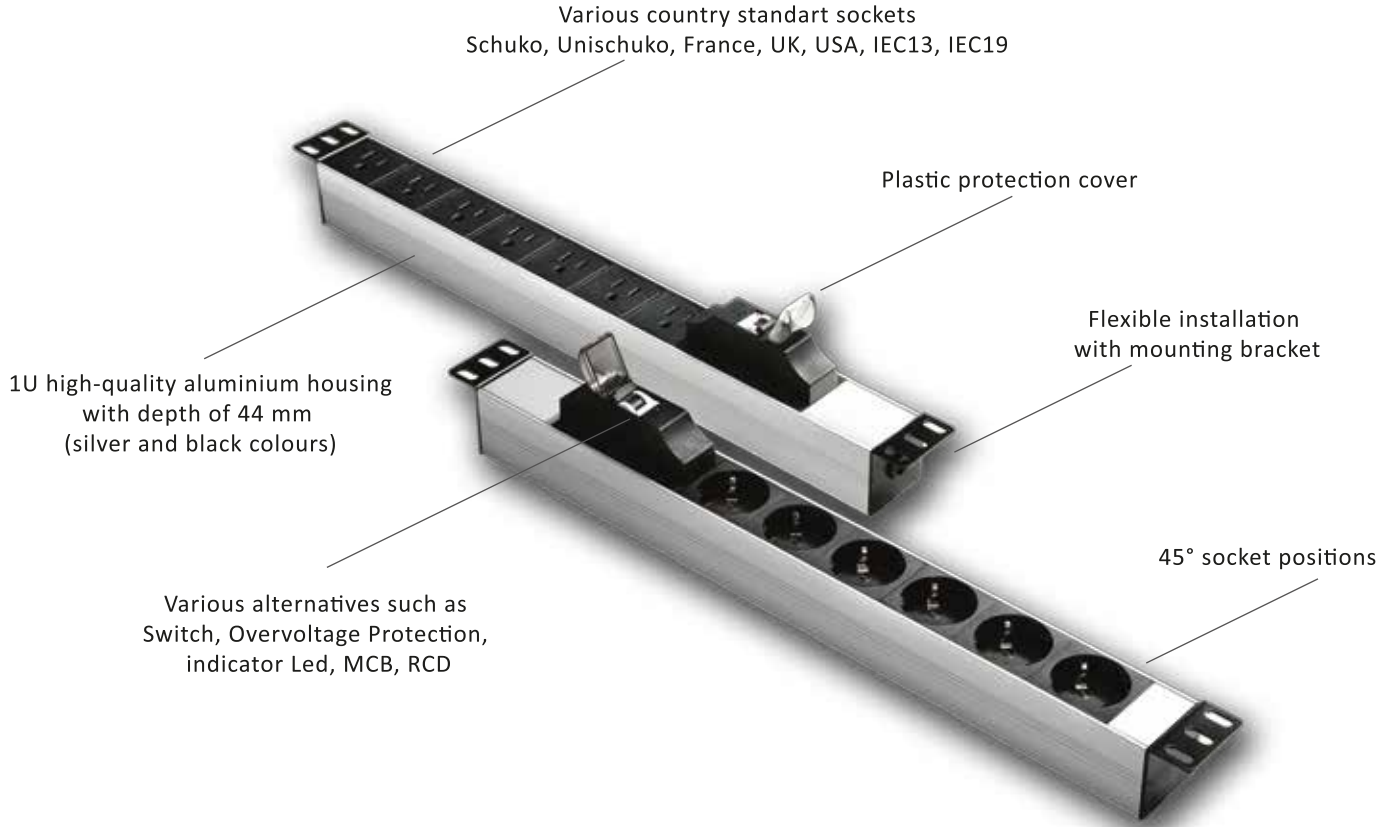
Ayarlanabilir ayağı sayesinde tavan ve yer arasında sabitlenir.

Çalışma alanlarında ihtiyaç duyulan tüm könnektörleri barındırır.



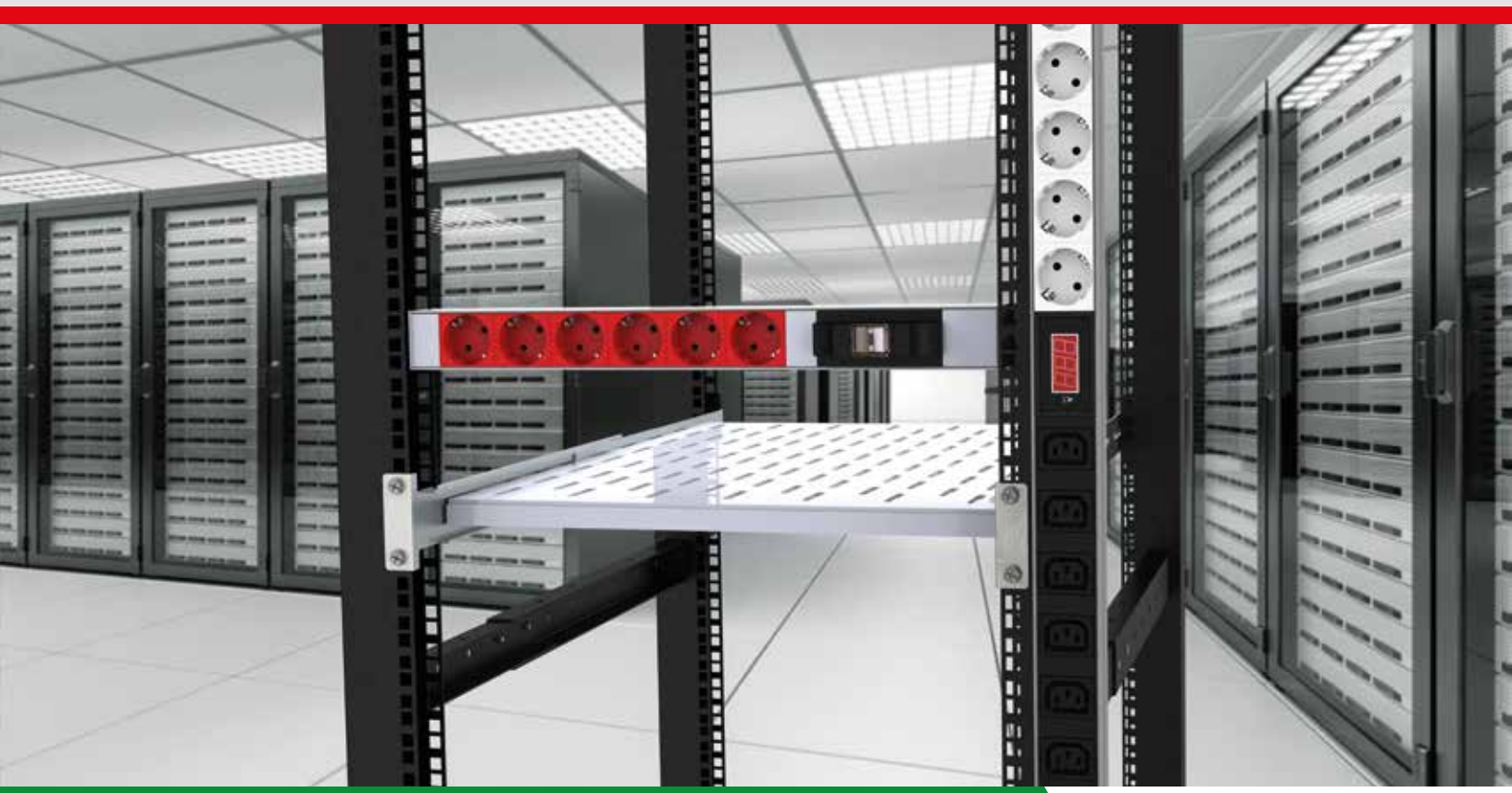


## 1U Power Strip — Unique Smart Design



## Space-Saving Integration of PDU in the Server Cabinet

- **Horizontal Power capacity for 19" data racks up to 9 schuko sockets.**  
19" data kabinlerinde 9 schuko prize kadar yatay kapasite.
- **Led light integration to power strip.**  
Led ışık modülü eklentisi.
- **Various alternatives for protection of the devices.**  
Bağlı cihazların güvenliği için çeşitli koruma seçenekleri.
- **Compliance with international standards.**  
Dünya standartlarına uygunluk.



- Customised solutions for Server and Network Racks.
- Power supply for control cabinets with high power requirements.
- Option of 3-phase power with three separate circuits.
- Vertical applications for 18U, 36U or 42U.

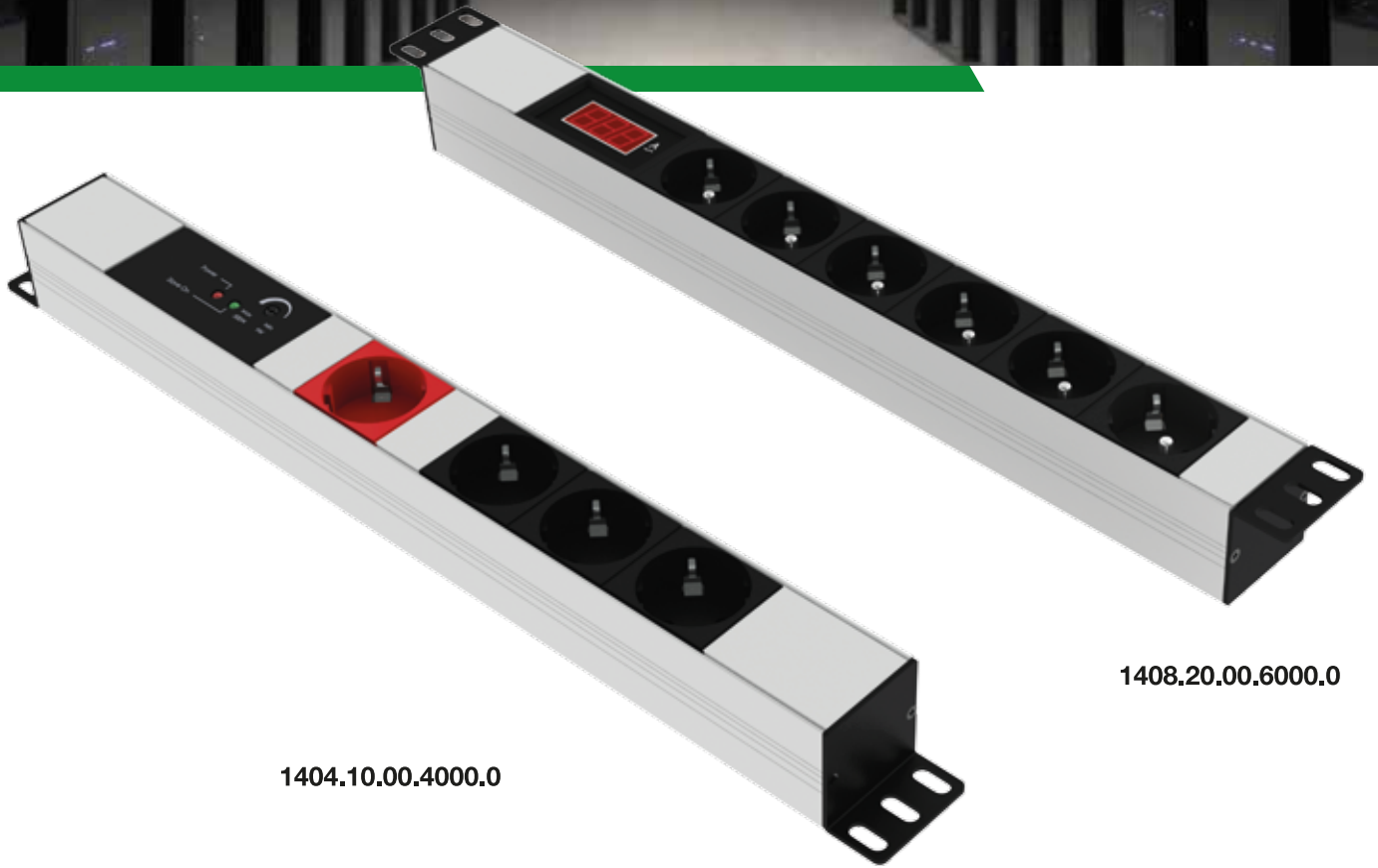
Server ve Network kabinler için özel çözümler.

Yüksek güç gerektiren kabinlere güç beslemesi.

Üç ayrı sigortalı devreye 3 faz güç bağlantısı.

18U, 36U ve 42U boy kabinlerde dikey priz uygulamaları.





1404.10.00.4000.0

1408.20.00.6000.0

- PDU' fitted with integral digital ampermetre and voltmeter.
- The digital ampermetre and voltmeter allows for a direct and current readout of amp & volt useage.  
PDU için gömme dijital ampermetre ve voltmeter takılabilir.  
Ampermetre ve voltmeter anlık olarak enerji kullanımını okur ve gösterir.
- Master & Slave circuit integrated power strip helps to control the business in relation with each other.  
Master & Slave modülü entegre edilmiş gruplar işinizi birbirleri ile ilişkili olarak yönetmenizi sağlar.

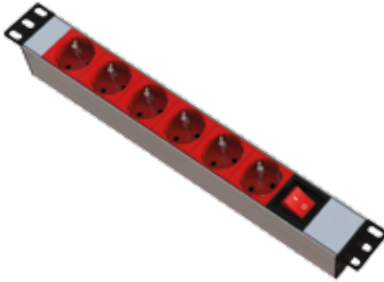
### 1U Group / 1U Grubu



Ref. Code	Standart Grup Standard Group	Ref. Code	Standart Grup Standard Group
<a href="#">1400.10.00.6000.0</a>	6 Schuko	<a href="#">1400.20.00.6000.0</a>	6 UPS
<a href="#">1400.10.00.7000.0</a>	7 Schuko	<a href="#">1400.20.00.7000.0</a>	7 UPS
<a href="#">1400.10.00.8000.0</a>	8 Schuko	<a href="#">1400.20.00.8000.0</a>	8 UPS
<a href="#">1400.10.00.9000.0</a>	9 Schuko	<a href="#">1400.20.00.9000.0</a>	9 UPS
<a href="#">1400.10.00.10000.0</a>	10 Schuko	<a href="#">1400.20.00.10000.0</a>	10 UPS



Ref. Code	Sigortalı Grup MCB Group	Ref. Code	Sigortalı Grup MCB Group
<a href="#">1401.10.00.6000.0</a>	6 Schuko + MCB	<a href="#">1401.20.00.6000.0</a>	6 UPS + MCB
<a href="#">1401.10.00.7000.0</a>	7 Schuko + MCB	<a href="#">1401.20.00.7000.0</a>	7 UPS + MCB
<a href="#">1401.10.00.8000.0</a>	8 Schuko + MCB	<a href="#">1401.20.00.8000.0</a>	8 UPS + MCB
<a href="#">1401.10.00.9000.0</a>	9 Schuko + MCB	<a href="#">1401.20.00.9000.0</a>	9 UPS + MCB
<a href="#">1401.10.00.10000.0</a>	10 Schuko + MCB	<a href="#">1401.20.00.10000.0</a>	10 UPS + MCB

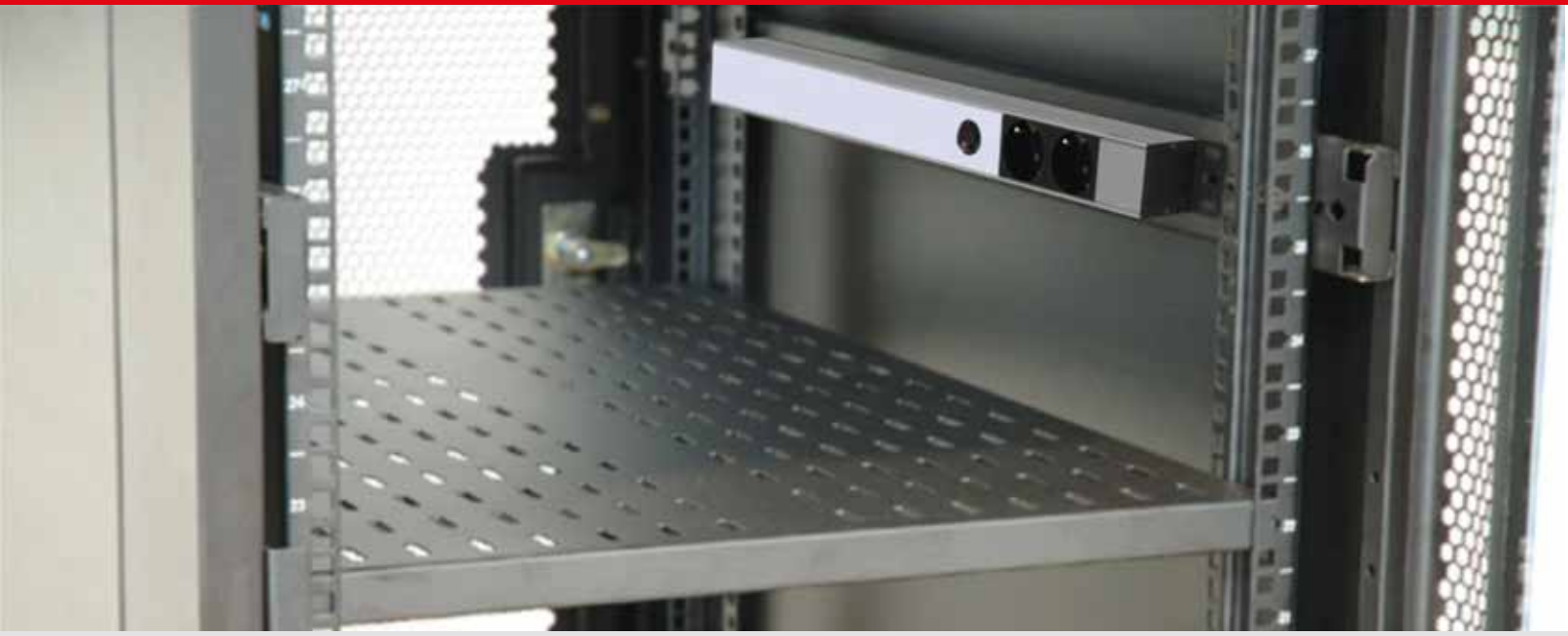


Ref. Code	Anahtarlı Grup Switch Group	Ref. Code	Anahtarlı Grup Switch Group
<a href="#">1403.1000.6000.0</a>	6 Schuko + Switch	<a href="#">1403.20.00.6000.0</a>	6 UPS + Switch
<a href="#">1403.1000.7000.0</a>	7 Schuko + Switch	<a href="#">1403.20.00.7000.0</a>	7 UPS + Switch
<a href="#">1403.1000.8000.0</a>	8 Schuko + Switch	<a href="#">1403.20.00.8000.0</a>	8 UPS + Switch
<a href="#">1403.1000.9000.0</a>	9 Schuko + Switch	<a href="#">1403.20.00.9000.0</a>	9 UPS + Switch
<a href="#">1403.1000.10000.0</a>	10 Schuko + Switch	<a href="#">1403.20.00.10000.0</a>	10 UPS + Switch

### W1U Group / W1U Grubu



Ref. Code	W1U Grup W1U Group	Ref. Code	W1U Grup W1U Group
<a href="#">1410.10.00.12000.0</a>	12 Schuko	<a href="#">1410.20.00.12000.0</a>	12 UPS
<a href="#">1411.10.00.9000.0</a>	9 Schuko + MCB	<a href="#">1411.20.00.9000.0</a>	9 UPS + MCB
<a href="#">1411.10.00.12000.0</a>	12 Schuko + MCB	<a href="#">1411.20.00.12000.0</a>	8 UPS + MCB
<a href="#">1413.10.00.12000.0</a>	12 Schuko + 2 Switch	<a href="#">1413.20.00.12000.0</a>	12 UPS + 2 Switch



1405.10.00.2000.1



1405.0000.0000.1

- **1U Lighting, can be mount on every work side of Rack where its need.**  
1U aydınlatma Rack içinde ihtiyaç duyulan her yerde kullanılabilir.
- **It can be combined with light module and the sockets options.**  
Aydınlatma modülü, diğer priz seçenekleri kombine edilebilir.
- **There is switch and sensor optional modules in lights design.**  
1U Aydınlatmada anahtar ve sensör modülleri opsiyoneldir.

### 1U Lateral Covera — 1U Yan Kapaklar



Plastic Single Side Lateral Cover  
Plastik Tek Yön Yan Kapak



Ref. Code: 743.200.001



Depended on need, it is possible to reserve the metal and cover  
İhtiyaca göre, metal yan kapağı çevirmek mümkündür.

Metal Lateral Cover  
Metal Yan Kapak



Ref. Code: 743.500.001



Flat Plastik Lateral Cover  
Düz Plastik Yan Kapak



Ref. Code: 743.300.001

Plastik Lateral Cover  
Plastik Yan Kapak



Ref. Code: 743.100.001

## Flexible Lateral Cover — Functional İdea

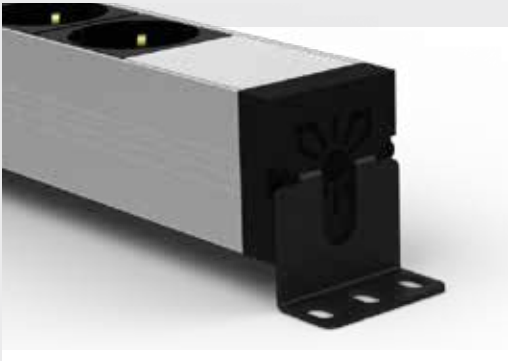
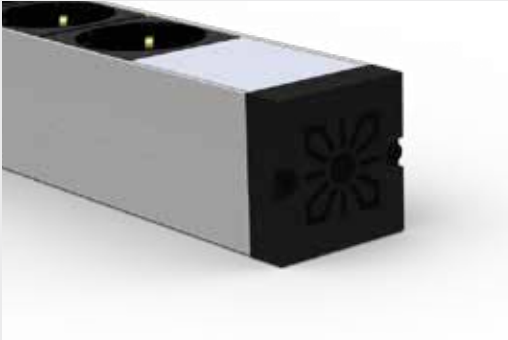


Ref. Code: 743.410.011



Ref. Code: 743.450.001

- Fixed at different hieghts and angles with the use of the metal mounting bracket.  
Metal Montaj kulağı sayesinde farklı açılarda ve yüksekliklerde montaj yapmak mümkündür.
- Very easy to fix the PDU by inserting the metal bracket in to the solts of the plastic end cap.  
Plastik kapakta bulunan kademelere, metal kulağı yerleştirerek kolayca montaj yapabilirsiniz.



### Profiles for 1U / 1U Kanalları



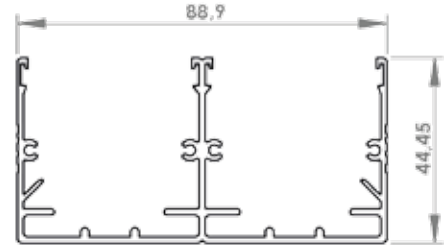
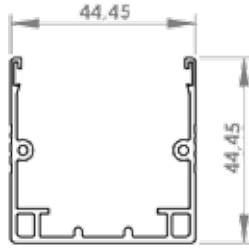
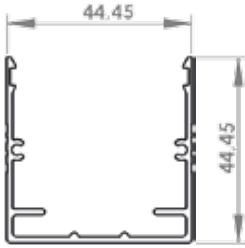
1U Single Aluminium  
1U Tekli Alüminyum



1U Single Plastic  
1U Tek Plastik



2U Double Aluminium  
2U Çift Alüminyum



### Sockets for 1U / 1U için Prizler



**305.216.001**  
Schuko Socket  
Şebeke Prizi



**305.316.001**  
Unischuko Socket  
UPS Prizi



**325.313.001**  
IEC C13 10A



**325.319.001**  
IEC C19 16A



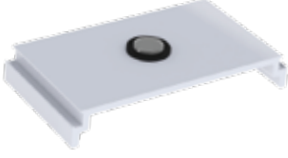
**316.313.101**  
BS Socket  
İngiliz Prizi



**316.310.001**  
USA Socket  
Amerikan Prizi



Power Accessories for 1U / 1U için Aksesuarlar



**743.614.015**  
LED Light Indicator  
LED Sinyal Işığı



**743.613.011**  
ON/OFF Switch  
ON-OFF Anahtar



**743.612.011**  
SPD(SURGE PROTECTIVE DEVICE)  
Gerilim Koruma



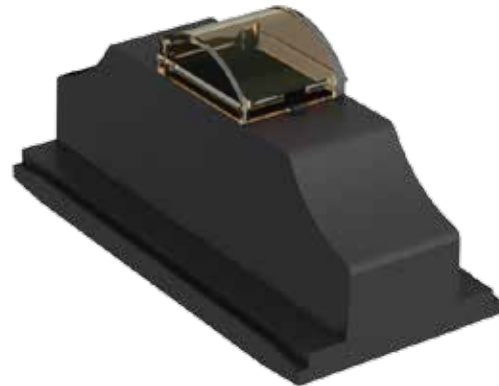
**743.611.011**  
MASTER & SLAVE



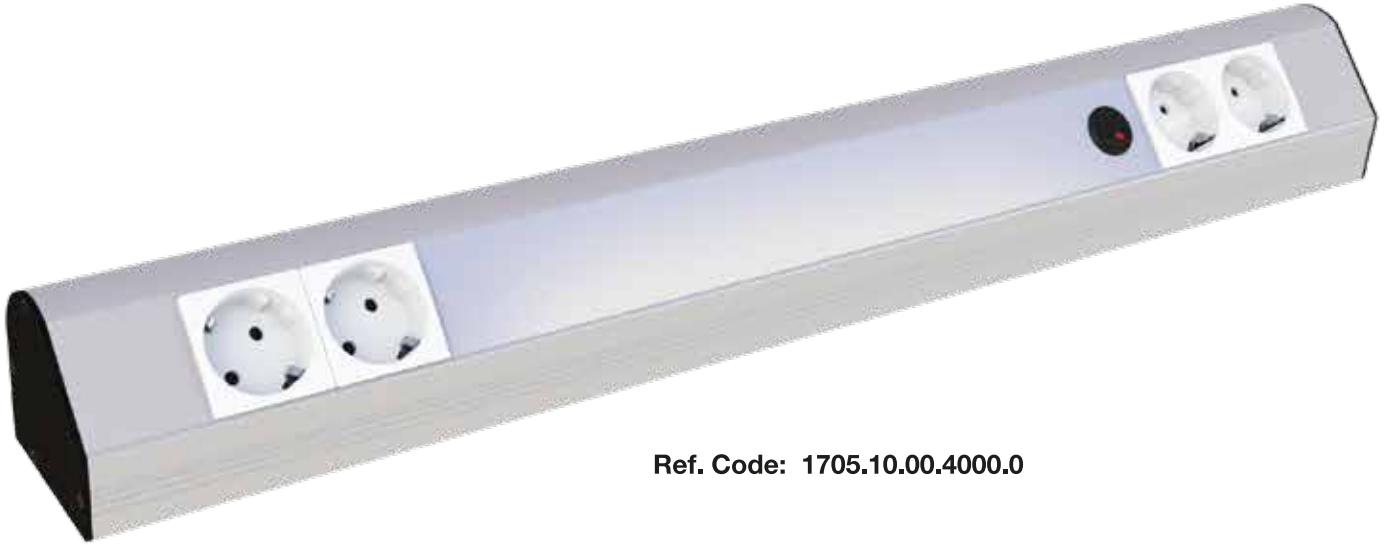
**743.610.021**  
USB Charger / USB Şarj



**743.600.021**  
Double MCB Box  
İkili Sigorta Kutusu



**743.600.011**  
Single MCB Box  
Tekli Sigorta Kutusu



Ref. Code: 1705.10.00.4000.0

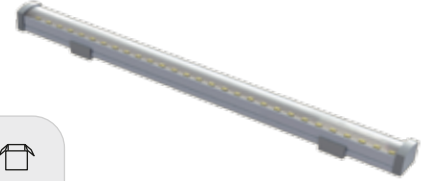
- **It can be combination of light and sockets options.**  
Aydınlatma ve priz seçenekleri kombine edilebilir.
- **Can installed easily by optional lateral cover with screw or magnet installation.**  
Miknatıs, vida ve özel yan kapaklar ile kolayca monte edilebilir.
- **Switch and sensor are available optional modules.**  
Anahtar ve sensör uygun opsiyonel modüllerdir.

1U Lighting Grup / 1U Aydınlatma Grubu



Ref. Code	1U Aydınlatma Grubu 1U Lighting Grup	
1405.10.00.2000.1	220 V 2Schuko + 32 cm boy LED + 13 cm LED Kablo	1
14010.10.00.2000.1	220 V 2Schuko + 32 cm boy LED + 13 cm LED Kablo+ Switch Kablolulu	1
1409.10.00.2000.1	220 V 2Schuko + 32 cm boy LED + 13 cm LED Kablo + Sensör	1

U20 Lighting Grup / U20 Aydınlatma Grubu



Ref. Code	Lineer LED Armatürleri Liner Lighting Grup	
1200.24.2.04.36	24V 1m Kablolulu + 20 cm 4.3W 360 Lümen	1
1200.24.3.04.36	24V 1m Kablolulu + 30 cm 4.3W 360 Lümen	1
1200.24.5.07.60	24V 1m Kablolulu + 50 cm 7.2W 600 Lümen	1
1200.24.10.14.36	24V 1m Kablolulu + 100 cm 14.1W 360 Lümen	1
1200.22.3.05.40	220V 1m Kablolulu + 35 cm 5W 400 Lümen	1
1200.22.4.06.48	220V 1m Kablolulu + 41 cm 6W 480 Lümen	1
1200.22.5.10.80	220V 1m Kablolulu + 52 cm 10W 800 Lümen	1

G Type Lighting Grup / G Tipi Aydınlatma Grubu



Ref. Code	G Tipi Aydınlatma Grubu G Type Lighting Grup	
1705.10.00.2000.0	220 V 53 cm boy-2Schuko + 30 cm 16W LED Anahtarlı	1
1705.10.00.2000.0	220 V 45 cm boy-2Schuko + 13 cm 8W LED Anahtarlı	1
1705.10.00.6000.0	220 V 71.5 cm boy-6Schuko + 2x30 cm 16W LED Anahtarlı	1
17035.10.00.2000.0	220 V 1 cm boy-2Schuko + Anahtar + 15 cm boy 8W LED Anahtarlı	1
17035.10.00.4000.0	220 V 67 cm boy-4Schuko + Anahtar + 30 cm 16W LED Anahtarlı	1
1709.10.00.2000.0	220 V 62 cm boy-2Schuko + 30 cm 16W LED Sensörlü	1



- **Surface Socket Boxes are mostly used in offices and working areas, where multiple connectors needed. The boxes tangentially mounted to the wiring trunkings.**

Dahili priz kutuları ofislerde ve çalışma alanlarında, çoklu konnektör çıkışı gereken yerlerde kullanılır. Duvarda bulunan kablo kanallarına teğet monte edilir.

- **The 45mm compatible structure, Surface Socket Boxes are responsive to our modular system with alternatives standard sockets, telephone, data, and multimedia solutions.**

45mm soket sistemine uyumlu yapısı ile farklı standartlarda priz kullanımı, Data, Telefon ve Multimedya konnektörleri için uygun bir çözümdür.

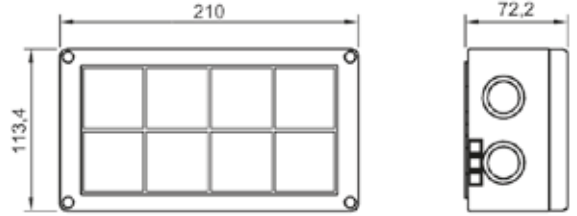
- **Plastic boxes are made from ABS material. There are brass nuts on the body and stainless bolts. Its quality gives perfect harmony to your trunkings. There are 2 versions with 8 or 12 pcs 45mm modules capacity.**

Plastik ABS hammaddeden yapılmaktadır, gövdede sarı somun ve paslanmaz cıvatalar kullanılmıştır. Kalitesi ile kablo kanalınıza uyum gösterir. 8 ve 12 adet 45mm lik modül kapasiteli iki modeli vardır.

# 210 Surface Socket Boxes

## 210 Dahili Priz Kutuları

TEM®



210.000.000  
113 x 210 x 70 mm

210 ile bazı örnekler  
some examples with 210



**Code** 210.044.000  
4 pcs ups socket  
4 pcs german socket



**Code** 210.008.000  
8 pcs ups socket



**Code** 210.080.000  
8 pcs german socket



**Code** 210.206.000  
2 pcs MCB  
6 pcs ups socket



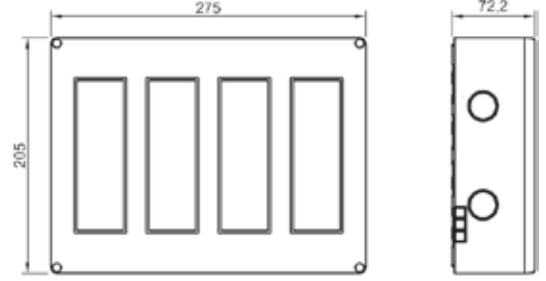
**Code** 210.260.000  
2 pcs MCB  
6 pcs german socket



**Code** 210.222.200  
2 pcs MCB  
2 pcs ups socket  
2 pcs german socket  
2 pcs T101



280.000.000  
210 x 280 x 70 mm



### 280 ile bazı örnekler some examples with 280



**Code** 280.066.000  
6 pcs ups socket  
6 pcs german socket



**Code** 280.106.300  
1 pcs MCB  
6 pcs ups socket  
3 pcs T103



**Code** 280.160.060  
1 pcs MCB  
6 pcs german socket  
6 pcs T104



**Code** 280.233.220  
2 MCBs  
3 pcs ups socket  
3 pcs german socket  
2 pcs T103 + 2 pcs T104



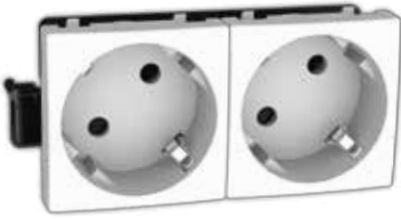
**Code** 280.209.000  
2 pcs MCB  
9 pcs UPS socket



**Code** 280.290.000  
2 pcs MCB  
9 pcs german socket



### Sockets for Cable Trunkings



Schuko Sockets  
Şebeke Prizleri



Unischuko Sockets  
UPS Prizleri



British Standard Sockets  
İngiliz Prizleri

- With the modularity of our products, you can design personal strips.  
Ürünlerimizin modüler yapısı sayesinde ihtiyaca yönelik gruplar tasarlayabilirsiniz.
- TEM multiple sockets has busbar system, no need to connect cable between the same modules.  
TEM çoklu prizlerde bara sistemi vardır, aynı modüllerde kablo bağlantısına gerek yoktur.
- There is the option of the sockets to have cable terminal on one or both side.  
Prizlerin bir ya da iki tarafından klemensli olma opsiyonu vardır.



Schuko Socket with Cable  
Kablo Girişli Şebeke Prizi

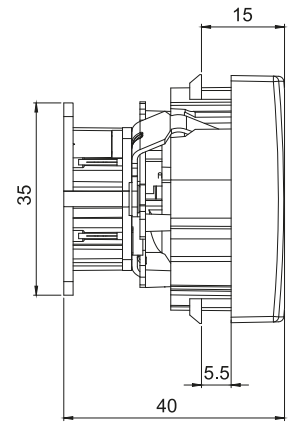
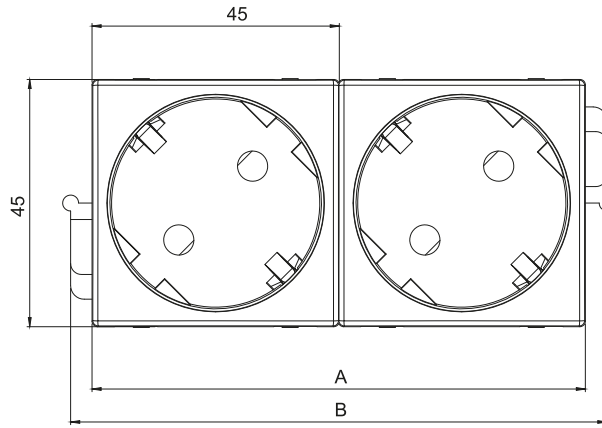







Schuko Socket with Terminal  
Klemens Girişli Şebeke Prizi

200-250V  
16A  
2P+⏏  
IEC 61643-1



Schuko Socket with Double Terminal  
Çift Klemens Girişli Şebeke Prizi

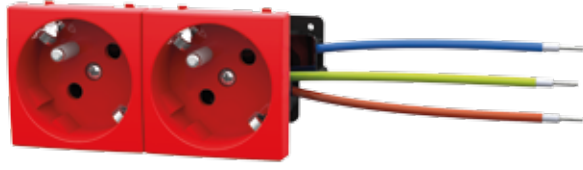


	Ref. Code	Ref Code with child protection	Ref. Code	A	B		 gr.
	300.216.002	300.216.102	<b>Kablo girişli</b> With cable	90	97.5	20	61
	301.216.002	301.216.102	<b>Klemens girişli</b> With terminal	90	113.7	20	68
	302.216.002	302.216.102	<b>Çift klemens girişli</b> With double terminal	90	128.9	20	81
	300.216.003	300.216.103	<b>Kablo girişli</b> With cable	135	142.5	15	93
	301.216.003	301.216.103	<b>Klemens girişli</b> With terminal	135	157.7	15	97
	302.216.003	302.216.103	<b>Çift klemens girişli</b> With double terminal	135	172.9	15	109
	300.216.004	300.216.104	<b>Kablo girişli</b> With cable	180	187	14	119
	301.216.004	301.216.104	<b>Klemens girişli</b> With terminal	180	202.2	14	127
	302.216.004	302.216.104	<b>Çift klemens girişli</b> With double terminal	180	217.4	10	139



# Socket for Cable Trunkings (UPS) Kanal Üstü UPS Prizi

# TEM®



Unischuko Socket with Cable  
Kablo Girişli UPS Prizi

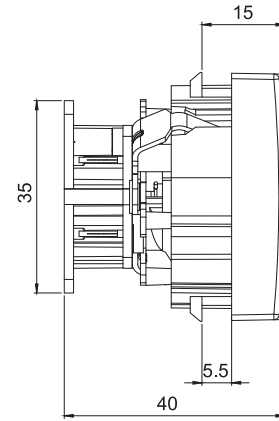
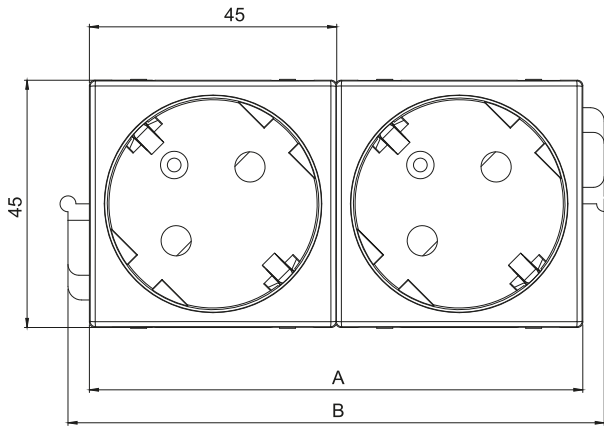


Unischuko Socket with Terminal  
Klemens Girişli UPS Prizi

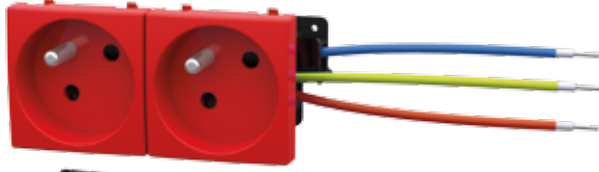
200-250V  
16A  
2P+⏚  
IEC 61643-1



Unischuko Socket with Double Terminal  
Çift Klemens Girişli UPS Prizi



	Ref. Code	Ref Code with child protection	Ref. Code	A	B		
							gr.
	300.316.002	300.316.102	<b>Kablo girişli</b> With cable	90	97.5	20	68
	301.316.002	301.316.102	<b>Klemens girişli</b> With terminal	90	113.7	20	75
	302.316.002	302.316.102	<b>Çift klemens girişli</b> With double terminal	90	128.9	20	87
	300.316.003	300.316.103	<b>Kablo girişli</b> With cable	135	142.5	15	100
	301.316.003	301.316.103	<b>Klemens girişli</b> With terminal	135	157.7	15	107
	302.316.003	302.316.103	<b>Çift klemens girişli</b> With double terminal	135	172.9	15	119
	300.316.004	300.316.104	<b>Kablo girişli</b> With cable	180	187	14	131
	301.316.004	301.316.104	<b>Klemens girişli</b> With terminal	180	202.2	14	138
	302.316.004	302.316.104	<b>Çift klemens girişli</b> With double terminal	180	217.4	10	150



French Socket with Cable  
Kablo Girişli Fransız Prizi

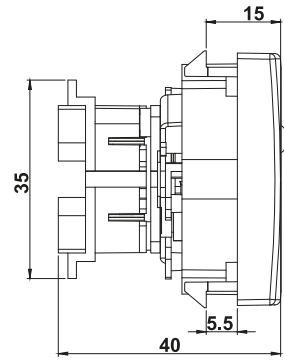
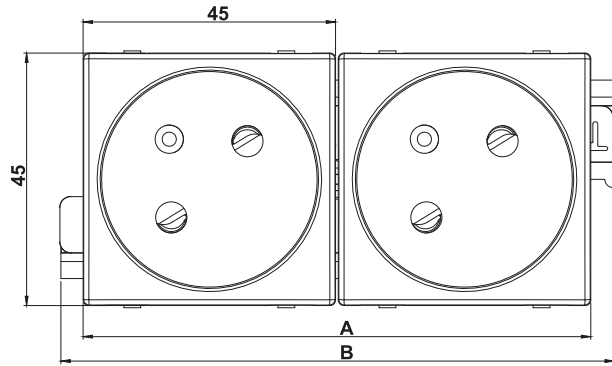







French Socket with Terminal  
Klemens Girişli Fransız Prizi

200-250V  
16A  
2P+⏚  
NF C 61-314



French Socket with Double Terminal  
Çift Klemens Girişli Fransız Prizi

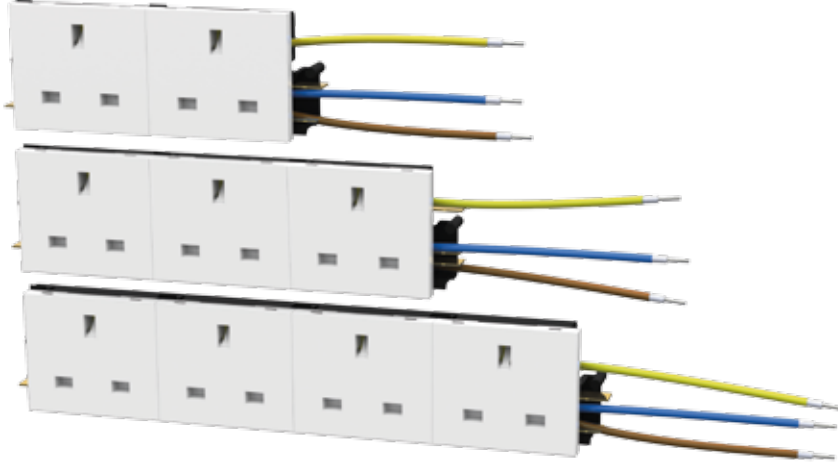


	Ref. Code	Ref Code with child protection	Ref. Code	A	B		 gr.
	310.316.002	310.316.102	<b>Kablo girişli</b> With cable	90	97.5	20	65
	311.316.002	311.316.102	<b>Klemens girişli</b> With terminal	90	113.7	20	72
	312.316.002	312.316.102	<b>Çift klemens girişli</b> With double terminal	90	128.9	20	82
	310.316.003	310.316.103	<b>Kablo girişli</b> With cable	135	142.5	15	95
	311.316.003	311.316.103	<b>Klemens girişli</b> With terminal	135	157.7	15	102
	312.316.003	312.316.103	<b>Çift klemens girişli</b> With double terminal	135	172.9	15	114
	310.316.004	310.316.104	<b>Kablo girişli</b> With cable	180	187	14	125
	311.316.004	311.316.104	<b>Klemens girişli</b> With terminal	180	202.2	14	133
	312.316.004	312.316.104	<b>Çift klemens girişli</b> With double terminal	180	217.4	10	144

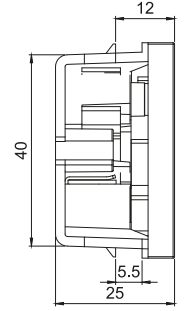
# British & IEC C13 Socket İngiliz ve Bilgisayar Prizi

# TEM®

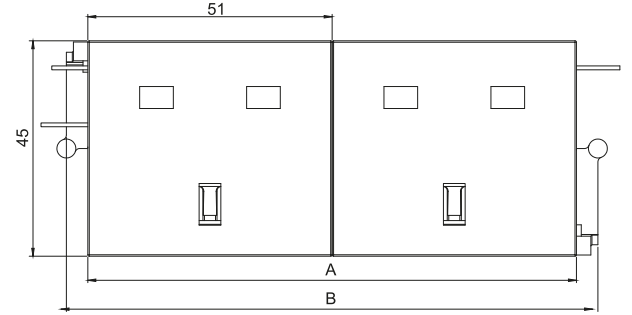
## British Socket for Cable Trunkings / Kanal Üstü İngiliz Prizi



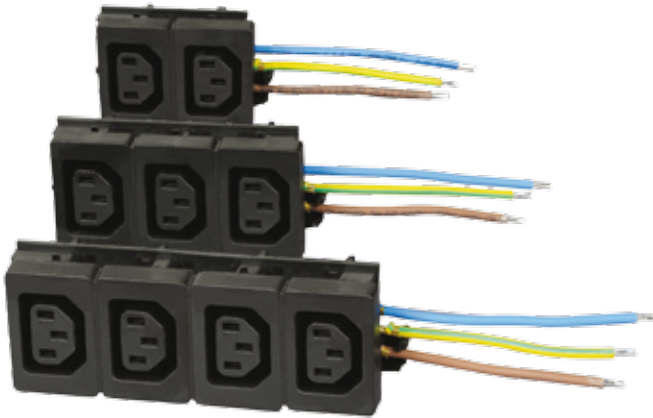
200-250V  
13A  
2P+⏏  
BS 1363



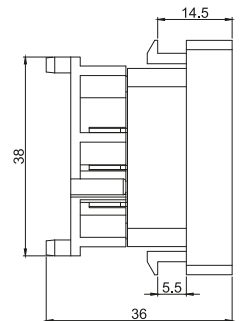
Ref. Code		A	B		gr.
315.313.102	<b>Kablo giriřli</b> With cable	90	111	30	60
315.313.103	<b>Kablo giriřli</b> With cable	135	161	30	90
315.313.104	<b>Kablo giriřli</b> With cable	180	211	30	115



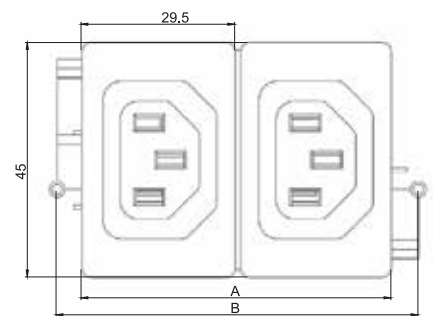
## International socket for Cable Trunking / Kanal Üstü Bilgisayar Prizi



200-250V  
10A  
2P+⏏  
IEC 320



Ref. Code		A	B		gr.
320.310.002	<b>Kablo giriřli</b> With cable	60	70	30	59
320.310.003	<b>Kablo giriřli</b> With cable	90.5	101	30	82
320.310.004	<b>Kablo giriřli</b> With cable	121	132	30	108.4



### International sockets / Çeşitli Priz Standartları



**345.216.150**  
Schuko Socket  
Şebeke Prizi



**346.216.150**  
Schuko Socket 45°  
Şebeke Prizi 45°



Back View of Schuko Sockets  
Şebeke Prizileri Arka Görünüş



**345.316.150**  
Unischuko Socket  
UPS Prizi



**346.316.150**  
Unischuko Socket 45°  
UPS Prizi 45°



Back View of Unischuko Sockets  
UPS Prizileri Arka Görünüş



**721.160.150**  
USA Socket  
Amerikan Prizi



**721.130.150**  
BS Socket  
İngiliz Prizi



**721.170.150**  
Universal Socket  
Üniversal Prizi



**247.216.150**  
French Socket  
Fransız Prizi

### ON/OFF Switch — ON-OFF Anahtar



**722.225.021**  
22.5x45 mm Switch  
22.5x45 mm Anahtar



**722.045.022**  
45x45 mm Switch  
45x45 mm Anahtar



**722.225.112**  
22.5x45 mm illuminated Switch  
22.5x45 mm Işıklı Anahtar



**721.045.122**  
45x45 mm illuminated Switch  
45x45 mm Işıklı Anahtar

# Single Schuko Sockets Tekli Şebeke Prizleri

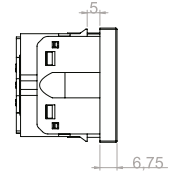
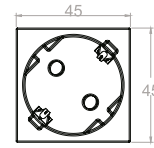
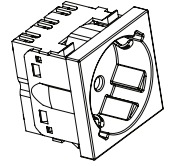
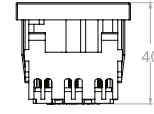
# TEM®

Schuko socket with Double Terminal  
Şebeke Prizi Çift Klemensli



200-250V  
16A  
2P+⏚

	Ref. Code		 gr.
<b>Düz kontak</b> straight posture	<b>345.216.150</b>	60	41
<b>45° kontak</b> 45° posture	<b>346.216.150</b>	60	43
<b>Düz kontak çocuk kilitli</b> straight posture with child protection	<b>345.216.250</b>	60	43
<b>45° kontak çocuk kilitli</b> 45° posture with child protection	<b>346.216.250</b>	60	45

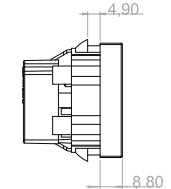
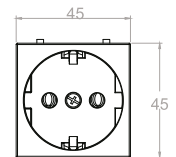
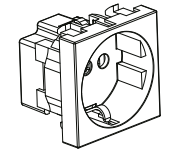
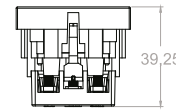


Schuko socket with Single Terminal  
Şebeke Prizi Tek Klemensli



200-250V  
16A  
2P+⏚

	Ref. Code		 gr.
<b>Düz kontak</b> straight posture	<b>245.216.150</b>	60	34
<b>45° kontak</b> 45° posture	<b>246.216.150</b>	60	34
<b>Düz kontak çocuk kilitli</b> straight posture with child protection	<b>245.216.250</b>	60	36
<b>45° kontak çocuk kilitli</b> 45° posture with child protection	<b>246.216.250</b>	60	36

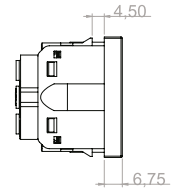
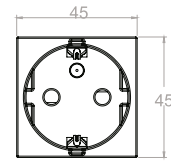
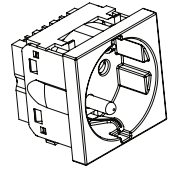
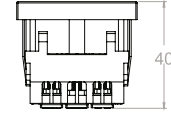


### Unischuko socket with Double Terminal UPS Prizi Çift Klemensli



200-250V  
16A  
2P+⏚

	Ref. Code		 gr.
<b>Düz kontak</b> straight posture	345.316.150	60	45
<b>45° kontak</b> 45° posture	346.316.150	60	46
<b>Düz kontak çocuk kilitli</b> straight posture with child protection	345.316.250	60	47
<b>45° kontak çocuk kilitli</b> 45° posture with child protection	346.316.250	60	48

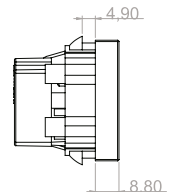
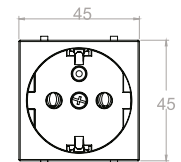
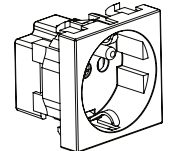
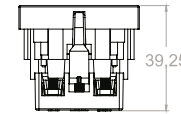


### Unischuko socket with Single Terminal UPS Prizi Tek Klemensli



200-250V  
16A  
2P+⏚

	Ref. Code		 gr.
<b>Düz kontak</b> straight posture	245.316.150	60	38
<b>45° kontak</b> 45° posture	246.316.150	60	38
<b>Düz kontak çocuk kilitli</b> straight posture with child protection	245.316.250	60	40
<b>45° kontak çocuk kilitli</b> 45° posture with child protection	246.316.250	60	40





## IEC Sockets / IEC Prizleri





720.130.150	720.130.160	720.140.320	720.140.340
IEC C13 10A push-in / tırnaklı	IEC C13 10A screwed / vidalı	IEC C14 10A push-in / tırnaklı	IEC C14 10A screwed / vidalı

720.190.150	720.190.160	720.200.320	720.240.340
IEC C19 16A push-in / tırnaklı	IEC C19 16A screwed / vidalı	IEC C20 16A push-in / tırnaklı	IEC C20 16A screwed / vidalı


720.130.200	720.190.200	720.140.300	720.200.300
IEC C13 10A inline / seyyar	IEC C19 16A inline / seyyar	IEC C14 10A inline / seyyar	IEC C20 16A inline / seyyar

720.140.321	720.200.321	720.400.201
IEC C14 10A	IEC C20 16A	2.5m <sup>2</sup> socket/soket
45x45mm	45x45mm	

<b>708.100.010</b>	<b>708.100.020</b>
Döşeme altı soket kapağı 50x50 mm Faceplate for under floor 50x50 mm	Döşeme altı soket kapağı 50x50 mm Faceplate for under floor 50x50 mm
	

<b>709.100.103</b>	<b>709.100.104</b>	<b>709.200.103</b>	<b>709.200.104</b>
Keystone plastik kapağı Plastic cover for keystone 45x45mm	Keystone plastik kapağı Plastic cover for keystone 22.5x45mm	Plastik kapağı Plastic cover 45x45mm	Plastik kapağı Plastic cover 22.5x45mm
			

<b>710.100.103</b>	<b>710.100.104</b>	<b>710.100.105</b>
Yaylı keystone kapağı Faceplate with shutter 45x45mm	Yaylı keystone kapağı Faceplate with shutter 22.5x45mm	Yaylı keystone kapağı Faceplate with shutter 45x45mm
		




<b>710.100.111</b>	<b>710.100.106</b>	<b>710.100.107</b>
Düz keystone kapağı Flat faceplate 22.5x45mm	Düz keystone kapağı Flat faceplate 45x45mm	Düz keystone kapağı Flat faceplate 45x45mm
		





<b>710.100.108</b>	<b>710.100.109</b>	<b>710.100.110</b>
Yükseltme keystone kapağı Lift up faceplate 45x45mm	Yükseltme keystone kapağı Lift up faceplate 45x45mm	Yükseltme keystone kapağı Lift up faceplate 45x45mm
		









## Keystone jack

710.100.350	710.100.360	710.100.332-2 PIN 710.100.334-4 PIN 710.100.332-6 PIN
CAT5 DATA plug / fişi	CAT6 DATA plug / fişi	Telephone plug / Telefon fişi
		






715.100.030	715.100.050	715.100.060	715.100.061
RJ11/12 CAT3 Telephone	RJ45 CAT5e DATA	RJ45 CAT6 DATA	RJ45 CAT6 DATA
			

715.200.030	715.200.050	715.200.060	715.200.061
RJ11/12 CAT3 Telephone f / f	RJ45 CAT5e DATA f / f	RJ45 CAT6 DATA f / f	RJ45 CAT6 DATA f / f
			

\* Please contact to sales expert for more variety.

Daha fazla seçenek için satış temsilcisi ile iletişime geçiniz.

### HDMI Faceplates / HDMI Konnektörleri

<p><b>715.400.001</b></p> <p>f / f 90° 22.5x45 mm</p>	<p><b>715.400.002</b></p> <p>f / f 180° 22.5x45 mm</p>	<p><b>715.400.003</b></p> <p>f / f 22.5x45 mm</p>
		
<p><b>715.400.004</b></p> <p>keystone f - f</p>		<p><b>715.400.005</b></p> <p>keystone with cable / kablolu 8-10cm f - f</p>
		

### USB Faceplates / USB Konnektörleri

<p><b>715.200.004</b></p> <p>f / f 90° 22.5x45 mm</p>	<p><b>715.200.005</b></p> <p>f / f 180° 22.5x45 mm</p>	<p><b>715.200.006</b></p> <p>screw-in 22.5x45 mm</p>
		
<p><b>715.200.001</b></p> <p>keystone f / f</p>	<p><b>715.200.002</b></p> <p>keystone f / f</p>	<p><b>715.200.003</b></p> <p>keystone with cable / kablolu 8-10cm f / f</p>
<p>USB - B</p> 	<p>USB- A</p> 	<p>USB - A</p> 

RAC & STEREO Faceplates / TV & STEREO Konnektörleri

715.500.002	715.500.001	715.600.001
RAC Faceplates screw-in / klemensli 22.5x45 mm	RAC Faceplates screw-in / klemensli 22.5x45 mm	STERRO screw-in 22.5x45 mm
		





VGA Faceplates / VGA Konnektörleri

715.300.001	715.300.002	715.300.004
6+2 screw-in / klemensli 2.5x45 mm	14+2 push-in / klemensli 22.5x45 mm	f / f connectors / konnektörü 180° 22.5x45 mm
		

TV & SAT Sockets / TV & Uydu Prizleri

723.000.150	723.000.300	723.000.400
TV socket / TV prizi	TV male socket / TV erkek prizi	SAT wall socket / Uydu prizi F connector / F konnektörlü
		



White/Beyaz	Black/Siyah	White/Beyaz	Black/Siyah	White/Beyaz	Black/Siyah	White/Beyaz	Black/Siyah
<b>715.100.100</b>	<b>715.100.101</b>	<b>715.100.110</b>	<b>715.100.111</b>	<b>715.200.110</b>	<b>715.200.111</b>	<b>715.200.100</b>	<b>715.200.101</b>
USB type: A/C Max Impulse: 2.1A 45x45mm		USB type: A/A Max Impulse: 2.1A 45x45mm		USB type: A Max Impulse: 2A 22.5x45 mm		USB type: A Max Impulse: 1A 22.5x45 mm	
							

## USB Charger — New generation of USB

- **TEM** has option for your needs to charge electronic devices.
- 45mm modularity brings flexible and universal solutions to all power units.
- The USB charger is compatible with the most common Smartphones and Tablets.
- The charger has protection against overcharging, overvoltage, short circuit and overheating.
- Standard colors are black and white.

**TEM**, elektronik ürünleriniz şarj edilmesi için çözüm sunuyor.

45mm modülerliği ile esnek ve uluslararası çözüm tüm gruplarda kullanabilirsiniz.

USB Şarj Modülü en çok kullanılan akıllı telefon ve tabletlere uyumludur.

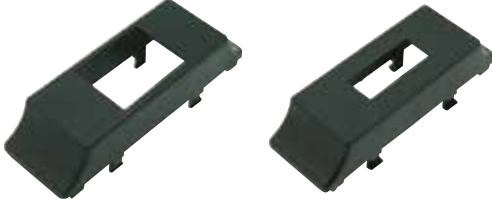
Şarj Modülleri, fazla yükleme, aşırı gerilim, kısadevre ve fazla ısınma korumalıdır.

Standart renk seçenekleri siyah ve beyazdır.

Accessories for Assembly  
Montaj Aksesuarları

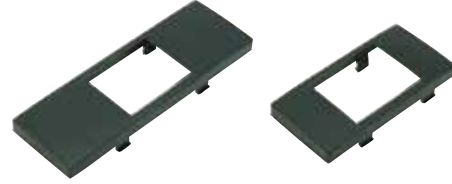
A-SK1

**KANAL SİGORTA KAPAĞI** circuit breaker cover  
for cable trunking



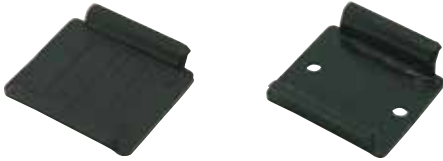
A-SK2

**210, 280 SİGORTA KAPAĞI** circuit breaker cover for  
210 and 280



A-SR1

**KANAL SİGORTA RAYI** circuit breaker support



A-KC1

**KABLO GEÇİŞ CONTASI** cable gland



Cables / Kablolar

725.315.113

**ÇİFT TOPRAKLI FİŞLİ KABLO** cable with double  
earthed plug



3G 1,5 H0VV-F 3 m.  
250V  
16A  
TS.IEC 60884-1

725.325.113

**ÇİFT TOPRAKLI FİŞLİ KABLO** cable with double  
earthed plug



3G 2,5 H0VV-F 3 m.  
250V  
16A  
TS.IEC 60884-1

725.310.212

**GÜÇ KABLOSU** power cable



3G 1 H0VV-F 1,8 m.  
250V 16A  
TS.IEC 60884-1  
250V 10A  
IEC 320

725.315.123

**İNGİLİZ FİŞLİ KABLO** cable with british plug



3G 1,5 H0VV-F 3 m.  
250V  
13A  
BS 1363-1

Some Samples of Power Accessories  
Çüç Aksesuarları Örnekleri



LED illuminated power indicator  
LED güç göstergesi



SPD surge protection device  
Gerilim Koruma



master slave module



iluminated switch 10-16A  
ışıklı anahtar 10-16A



Emergency Stop  
Acil Stop



mcb circuit breaker  
Sigorta



Double MCB or RCB Residual Current Breaker  
çift sigorta ya da kaçak akım



EAmperemeter,  
Voltmeter, Multimeter

TEM Technical Electrical Materials Industry and Trade Inc.  
TEM TEKNİK ELEKTRİK MALZEMELERİ SAN. ve TİC. A.Ş,



**TEM**<sup>®</sup>

### Factory

No:5, Selimpaşa Ortaköy Sanayi District,  
İlter Avenue, Mor Menekşe St.  
Silivri / İSTANBUL / TURKEY

T. +90 212 485 19 00 Pbx  
F. +90 212 485 15 33

### Fabrika

Selimpaşa Ortaköy Sanayi Bölgesi,  
İlter Bulvarı, Mor Menekşe Sok. No:5  
Silivri / İSTANBUL / TÜRKİYE

T. +90 212 485 19 00 Pbx  
F. +90 212 485 15 33